



# Discovery Education Assessment Sample Reports

## Florida

Now you don't have to wait until the end of the year to know how your students will perform on the FCAT. **Discovery Education Assessment** provides reliable, state-specific, research-based assessments. In partnership with your school, Discovery Education Assessment focuses on helping students and teachers achieve their maximum potential and improve test results. In addition, the product is easy to use, affordable, and teacher friendly.

Using Discovery Education Assessment, your school will receive test results for individuals, classes, and grade levels from the beginning of the school year. Based on these results, teachers use resources and tools to customize individual and group learning plans.

Specifically, teachers receive the following information from each predictive test:

- Prediction of proficiency for reading, language arts, and math
- Mastery levels for FCAT objectives
- Measurement of the *Florida Course of Study*
- Item analysis detailing percent correct, item difficulty level, and content measured
- Growth score for monitoring AYP goals
- Individual student item answers, with total items correct and percentage by domain

Discovery Education Assessment reports are the most state-specific results available. No other formative assessment offers Florida-specific predictive assessment. Reports are specifically based on Florida's terms and definitions. Proficiency is identified as *Level 1*, *Level 2*, *Level 3* and *Level 4-5*. Assessments measure progress throughout the year, toward individual learning goals and state expectations. In addition, all information is provided at the following levels:

Student → Class → Grade → School → District

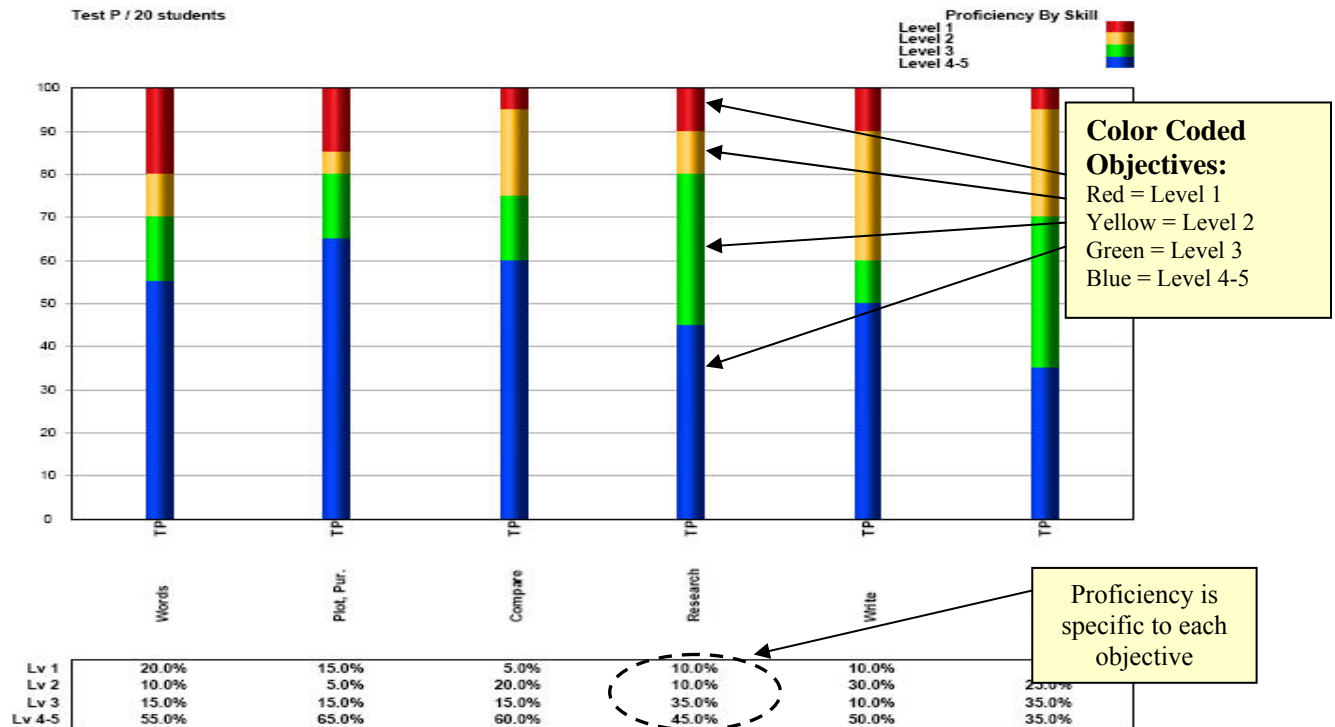
Reports are also available for the following subgroups: Gender, Ethnicity, LEP, Students with Disabilities, and Economically Disadvantaged. Additional subgroups can be created based on your specific needs.

Discovery Education Assessment helps you transform data into information, information into knowledge, and knowledge into action.



# Discovery Education Assessment Sample Reports

## Class and Grade Summary Report



## Student Report

Test P of PAB (20 students)  
Teacher: 1 FLDemoGradeSix  
Class: Grade 6 Reading  
Grade: Grade 6  
Subject: Reading/Language Arts

Student performance on each objective

Proficiency level by student

Individual students within class

Subject Proficiency  
Level 1 (0-11 correct)  
Level 2 (12-14 correct)  
Level 3 (15-20 correct)  
Level 4-5 (21-33 correct)  
determined by # correct

|              | Words  | Plot, Pur. | Compare | Research | Write  | Lang.  |           |
|--------------|--------|------------|---------|----------|--------|--------|-----------|
| J            | Lv 4-5 | Lv 4-5     | Lv 2    | Lv 1     | Lv 2   | Lv 2   | Lv 2 14   |
| ALLEN, R     | Lv 4-5 | Lv 4-5     | Lv 4-5  | Lv 4-5   | Lv 4-5 | Lv 4-5 | Lv 4-5 25 |
| CARTER, F    | Lv 4-5 | Lv 4-5     | Lv 4-5  | Lv 4-5   | Lv 4-5 | Lv 4-5 | Lv 4-5 28 |
| CLARK, A     | Lv 1   | Lv 2       | Lv 2    | Lv 3     | Lv 2   | Lv 4-5 | Lv 1 17   |
| GONZALEZ, M  | Lv 1   | Lv 4-5     | Lv 3    | Lv 2     | Lv 1   | Lv 2   | Lv 1 11   |
| GREEN, C     | Lv 4-5 | Lv 4-5     | Lv 3    | Lv 3     | Lv 4-5 | Lv 3   | Lv 4-5 22 |
| HALL, E      | Lv 1   | Lv 1       | Lv 1    | Lv 3     | Lv 2   | Lv 1   | Lv 1 4    |
| HERNANDEZ, E | Lv 4-5 | Lv 4-5     | Lv 4-5  | Lv 4-5   | Lv 4-5 | Lv 4-5 | Lv 4-5 30 |
| HILL, M      | Lv 4-5 | Lv 4-5     | Lv 4-5  | Lv 4-5   | Lv 4-5 | Lv 4-5 | Lv 4-5 31 |
| JACKSON, E   | Lv 4-5 | Lv 3       | Lv 4-5  | Lv 3     | Lv 2   | Lv 3   | Lv 3 16   |
| KING, G      | Lv 2   | Lv 1       | Lv 2    | Lv 3     | Lv 2   | Lv 3   | Lv 1 8    |
| LEE, T       | Lv 1   | Lv 4-5     | Lv 3    | Lv 1     | Lv 1   | Lv 2   | Lv 1 9    |



Test P of PAB (20 students)  
 Teacher: 1 FL Demo Grade Six  
 Class: Grade 6 Reading  
 Grade: Grade 6  
 Subject: Reading/Language Arts

| State Curriculum Code, Standard, Subskill |     |       |       |      |                    |   |                      |                                    |                                     |       |
|---|-----|-------|-------|------|--------------------|---|----------------------|------------------------------------|-------------------------------------|-------|
| Q.#                                       | Ans | Right | Wrong | Code | Reporting Category | Reporting Subcategory                     | Code                 | Reporting Category                 | Reporting Subcategory               | Level |
|   |     | #     | %     | #    | %                  |   |                      |                                    |                                     |       |
| FL State Reporting Categories 2008        |     |       |       |      |                    | FL State Reporting Categories 2006        |                      |                                    |                                     |       |
| Reading/Language Arts                     |     |       |       |      |                    |   |                      |                                    |                                     |       |
| 1   | B   | 13    | 65    | 7    | 35                 | LA.6.2.1.2 Literary Analysis              | Plot Elements        | E.2.3.1 Main Idea, Plot, & Purpose | E.2.3.1 Character Development       | Easy  |
| 2   | A   | 11    | 55    | 9    | 45                 | LA.6.1.6.3 Reading Process: Vocabulary    | Context Clues        | A.1.3.2 Words & Phrases in Context | A.1.3.2 Analyze Words & Text        | Mod.  |
| 3   | C   | 14    | 70    | 6    | 30                 | LA.6.1.7.5 Reading Process: Comprehension | Repair Comprehension | A.2.3.1 Main Idea, Plot, & Purpose | A.2.3.1 Details & Facts             | Easy  |
| 4   | D   | 14    | 70    | 6    | 30                 | LA.6.2.1.5 Literary Analysis              | Interpret Text       | A.2.3.8 Reference & Research       | A.2.3.8 Validity & Accuracy of Info | Mod.  |
| 5   | C   | 10    | 50    | 10   | 50                 | LA.6.2.1.7 Literary Analysis              | Use of Language      | A.2.3.1 Main Idea, Plot, & Purpose | A.2.3.2 Author Point of View        | Hard  |
| 6   | B   | 12    | 60    | 8    | 40                 | LA.6.1.6.7 Reading Process: Vocabulary    | Affixes              | A.1.3.2 Words & Phrases in Context | A.1.3.2 Analyze Words & Text        | Mod.  |
| 7   | D   | 12    | 60    | 8    | 40                 | LA.6.1.7.5 Reading Process: Comprehension | Text Structure       | A.2.3.1 Main Idea, Plot, & Purpose | A.2.3.1 Pattern of Organization     | Mod.  |
| 8   | A   | 12    | 60    | 8    | 40                 | LA.6.1.7.4 Reading Process: Comprehension | Cause/Effect         | A.2.2.1 Comparisons & Cause/Effect | E.2.2.1 Cause/Effect                | Mod.  |

Color coding indicates overall class mastery by item

Item difficulty level

[illegible]





# Discovery Education Assessment Sample Reports

## Student Subskill Report

| Reporting Categories | Words   |         |         |         |         |         | Plot, Pur. |         |         |         |         |         | Compare |         |         |         |         |         | Research |         |         |         |         |         | Write    |          |          |          |          |          | Lang.    |          |   |    |    |    | Proficiency Number Correct (out of 33) |  | Total Number Correct |
|----------------------|---------|---------|---------|---------|---------|---------|------------|---------|---------|---------|---------|---------|---------|---------|---------|---------|---------|---------|----------|---------|---------|---------|---------|---------|----------|----------|----------|----------|----------|----------|----------|----------|---|----|----|----|--|--|----------------------|
|                      | 2       | 6       | 12      | 14      | 15      | 19      | 30         | 3       | 5       | 7       | 10      | 13      | 17      | 21      | 22      | 8       | 9       | 11      | 16       | 26      | 4       | 18      | 20      | 29      | 25       | 27       | 32       | 33       | 23       | 24       | 28       | 31       |   |    |    |    |  |  |                      |
| Question Number      | 2       | 6       | 12      | 14      | 15      | 19      | 30         | 3       | 5       | 7       | 10      | 13      | 17      | 21      | 22      | 8       | 9       | 11      | 16       | 26      | 4       | 18      | 20      | 29      | 25       | 27       | 32       | 33       | 23       | 24       | 28       | 31       |   |    |    |    |  |  |                      |
| State Code           | A.1.3.2 | A.1.3.2 | A.1.2.3 | A.1.3.2 | A.1.3.2 | A.1.2.3 | A.1.3.2    | E.2.3.1 | E.2.3.1 | A.2.3.2 | A.2.3.1 | A.2.3.1 | A.2.3.1 | A.2.3.1 | A.2.3.2 | E.2.2.1 | A.2.2.7 | E.2.2.1 | A.2.2.7  | A.2.2.7 | A.2.3.8 | A.2.3.8 | A.2.3.8 | A.2.3.5 | B.1.3.2b | B.1.3.1a | B.1.3.3b | B.1.2.3f | D.2.3.3a | D.1.3.1a | D.1.3.2a | D.2.3.2a |   |    |    |    |  |  |                      |
| Item Difficulty      | M       | M       | H       | M       | E       | H       | E          | E       | E       | H       | M       | M       | M       | M       | M       | M       | M       | M       | H        | E       | M       | M       | H       | M       | H        | M        | M        | E        | M        | E        | M        | H        |   |    |    |    |  |  |                      |
| Correct Answer       | A       | B       | A       | A       | B       | D       | A          | B       | C       | C       | D       | B       | D       | C       | C       | D       | A       | D       | C        | D       | B       | D       | C       | A       | B        | B        | D        | A        | C        | B        | A        | B        | C |    |    |    |  |  |                      |
| ADAMS, J             |         |         | C       | B       |         |         |            | C       |         |         | C       |         |         |         | B       |         | C       | A       |          | A       | D       |         | A       | B       | C        | D        | D        | C        |          | B        | D        |          | D | B  | 14 | 14 |  |  |                      |
| ALLEN, R             |         |         |         |         |         |         | B          | D       |         |         |         |         |         | B       | B       | B       |         | B       |          |         | D       |         | A       |         |          |          |          |          |          |          |          |          |   |    | 25 | 25 |  |  |                      |
| CARTER, F            |         |         |         | B       |         |         |            | D       |         |         |         |         |         | B       |         |         |         |         | B        |         |         |         |         |         |          |          |          |          |          |          |          | B        |   |    | 28 | 28 |  |  |                      |
| CLARK, A             | B       | D       | B       |         | D       | A       | C          |         | B       | B       | A       |         | A       | B       | B       |         | D       |         | B        | B       | D       |         |         | B       | C        |          | A        | B        | B        | D        |          |          |   |    | 11 | 11 |  |  |                      |
| GONZALEZ, M          | C       | D       | D       | B       | D       |         | C          |         |         | B       |         |         | A       |         | C       |         | A       |         | A        | D       | C       |         | C       | D       |          | D        | A        | B        | B        |          | B        | D        | B |    | 11 | 11 |  |  |                      |
| GREEN, C             |         |         | C       | D       |         |         |            |         |         | B       |         |         |         |         |         |         |         |         |          | B       | A       | D       |         |         | B        | D        |          |          | B        |          | D        | D        |   |    | 22 | 22 |  |  |                      |
| HALL, E              | C       | D       | C       | B       | D       |         | B          | D       | B       | B       | A       | D       | A       | B       | B       | A       | B       | B       | B        | A       | D       |         | B       |         | D        |          | A        | B        | B        | D        | C        | C        | B |    | 4  | 4  |  |  |                      |
| HERNANDEZ, E         | C       |         |         |         |         |         |            |         |         |         |         |         |         | B       |         |         |         |         |          | D       |         |         |         |         |          |          |          |          |          |          |          |          |   |    | 30 | 30 |  |  |                      |
| HILL, M              |         |         |         | D       |         | B       |            |         |         |         |         |         |         |         |         |         |         |         |          |         |         |         |         |         |          |          |          |          |          |          |          |          |   |    | 31 | 31 |  |  |                      |
| JACKSON, E           | D       |         |         |         |         | A       | C          |         | B       |         | C       | A       |         | B       | B       |         | B       |         | C        |         |         | B       | B       |         | D        | A        | B        |          | D        | B        |          |          |   | 16 | 16 |    |  |  |                      |
| KING, G              |         | C       | D       |         | C       | B       |            | C       | B       | B       | C       | D       | A       | B       | B       | A       |         | A       | B        | C       | D       |         | B       |         | D        | D        | B        | B        | D        |          | D        |          |   |    | 8  | 8  |  |  |                      |
| LEE, T               | C       | D       | B       | D       | D       | A       |            |         | B       |         | C       |         | B       | B       |         |         |         | C       | B        | A       |         | B       | B       | D       | D        | D        | B        | D        | B        | C        |          | D        | B |    | 9  | 9  |  |  |                      |
| LEWIS, J             | C       |         |         |         |         |         | C          |         |         |         |         |         |         |         |         |         |         |         |          |         |         |         |         |         |          |          |          |          |          |          |          |          |   |    | 31 | 31 |  |  |                      |
| LOPEZ, J             | B       |         | B       |         | D       | C       |            |         |         | B       |         |         |         |         |         |         | A       |         | A        |         |         |         |         | C       |          |          | B        | B        | D        | B        |          |          |   |    | 21 | 21 |  |  |                      |

FL-specific standards

Plot, Pur.

Individual student performance

State code for each item

State proficiency prediction by student

Individual student performance

FL-specific standards

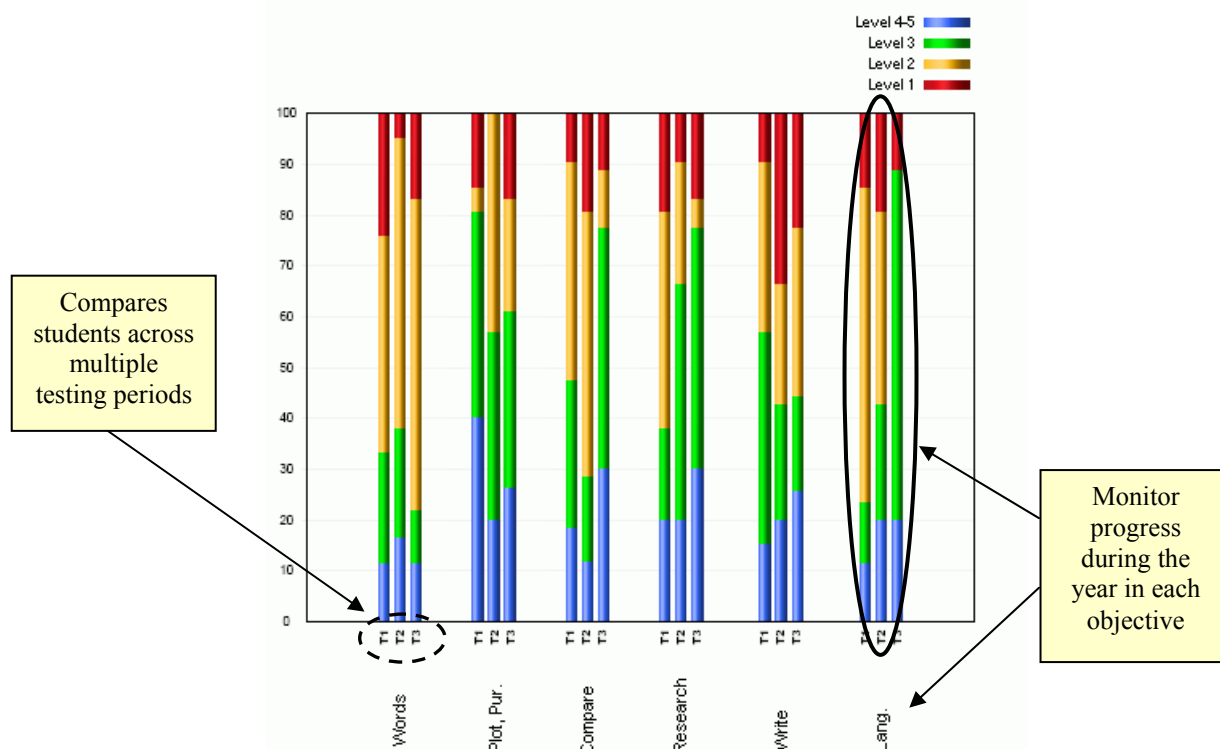
State proficiency prediction by student

State code for each item



# Discovery Education Assessment Sample Reports

## Comparison Report



## Individual Student Report

Student: Oberman, Alyssa  
Teacher: Jason Kemp  
Class: Kemp read/math  
Grade: 3  
Subject: Reading/Lang Arts

Compare across multiple test periods

Level 4-5  
Level 3  
Level 2  
Level 1

Great for Parent Conferences, Tutors, IEPs and Student Files

| Skills     | Test 1 | Test 2 | Test 3 | Description of Skills  |
|------------|--------|--------|--------|--|
| Words      | Lv 3   | Lv 3   | Lv 2   | Using context clues, prefixes, suffixes, root words, and word relationships, the student identifies the meaning of a word or phrase in a passage and/or graphic. Simple analysis and/or direct inference may be required to comprehend the meaning of the word or phrase.  |
| Plot, Pur. | Lv 3   | Lv 3   | Lv 4-5 | The student identifies the following from a passage: main idea or essential message, relevant supporting details and facts, and/or chronological order or other sequence of events.  |
| Compare    | Lv 3   | Lv 3   | Lv 4-5 | The student recognizes the use of comparison and contrast in a text.   |
| Research   | Lv 3   | Lv 1   | Lv 3   | The student identifies meanings through the process of selecting and/or organizing information from a single text that contains multiple representations of information. The complexity of the presentation will be appropriate to third grade. This process may involve application, analysis, synthesis, and/or evaluation appropriate to third grade. |
| Write      | Lv 3   | Lv 3   | Lv 4-5 | The student uses the writing processes effectively to communicate.   |
| Lang.      | Lv 3   | Lv 1   | Lv 2   | The student uses appropriate conventions of language to communicate effectively in writing.  |

Description of objectives

Report shows student proficiency for each assessment across all objectives

| Reading/Lang Arts |        |        |        |
|-------------------|--------|--------|--------|
|                   | Test 1 | Test 2 | Test 3 |
| Number Correct    | 21     | 15     | 21     |
| Percent Correct   | 84     | 60     | 84     |
| Proficiency Score | 284    | 360    | 384    |

Proficiency Levels  
Level 1  
Level 2  
Level 3  
Level 4-5  
determined by # correct

Proficiency and Growth Score Data



# Discovery Education Assessment Sample Reports

## District Reports School Comparison

Comparison Table: Summary of Students by Subject

|                | Level 4.5 |      | Level 3 |      | Level 2 |     | Level 1 |      | Percent<br>Lv 3+ | Totals |     |   |
|----------------|-----------|------|---------|------|---------|-----|---------|------|------------------|--------|-----|---|
|                | #         | %    | #       | %    | #       | %   | #       | %    |                  | #      | %   |   |
| Test 1 Results |           |      |         |      |         |     |         |      |                  |        |     |   |
| All Schools    | 7         | 28.0 | 9       | 36.0 | 2       | 8.0 | 7       | 28.0 | 64.0             | 25     | 100 | <div><div></div><div></div><div></div><div></div></div> |
| Demo           | 7         | 29.2 | 9       | 37.5 | 2       | 8.3 | 6       | 25.0 | 66.7             | 24     | 100 | <div><div></div><div></div><div></div><div></div></div> |

Comparison Table: Summary of Students by Skill

|                |             | Total<br>Students | Level 4.5 |      | Level 3 |      | Level 2 |      | Level 1 |      | Total |
|----------------|-------------|-------------------|-----------|------|---------|------|---------|------|---------|------|-------|
|                |             | #                 | %         | #    | %       | #    | %       | #    | %       | #    | %     |
| Test 1 Results |             |                   |           |      |         |      |         |      |         |      |       |
| Words          | All Schools | 25                | 11        | 44.0 | 7       | 28.0 | 6       | 24.0 | 1       | 4.0  | 25    |
| 5 items        | Demo        | 24                | 11        | 45.8 | 7       | 29.2 | 6       | 25.0 | 0       | 0.0  | 24    |
| Plot, Pur.     | All Schools | 25                | 12        | 48.0 | 5       | 20.0 | 3       | 12.0 | 5       | 20.0 | 25    |
| 8 items        | Demo        | 24                | 12        | 50.0 | 5       | 20.8 | 2       | 8.3  | 5       | 20.8 | 24    |
| Compare        | All Schools | 25                | 12        | 48.0 | 6       | 24.0 | 6       | 24.0 | 1       | 4.0  | 25    |
| 8 items        | Demo        | 24                | 12        | 50.0 | 6       | 25.0 | 5       | 20.8 | 1       | 4.2  | 24    |
| Research       | All Schools | 25                | 9         | 36.0 | 7       | 28.0 | 4       | 16.0 | 5       | 20.0 | 25    |
| 4 items        | Demo        | 24                | 9         | 37.5 | 7       | 29.2 | 3       | 12.5 | 5       | 20.8 | 24    |
| Write          | All Schools | 25                | 10        | 40.0 | 4       | 16.0 | 7       | 28.0 | 4       | 16.0 | 25    |

## Drill Down Reports

|                         |            | Level 4.5 |       | Level 3 |       | Level 2 |       | Level 1 |       |
|-------------------------|------------|-----------|-------|---------|-------|---------|-------|---------|-------|
|                         |            | #         | %     | #       | %     | #       | %     | #       | %     |
| Test 1 Results          |            |           |       |         |       |         |       |         |       |
| <a href="#">Grade 3</a> | Words      | 11        | 45.83 | 7       | 29.17 | 6       | 25.00 | 0       | 0.00  |
|                         | Plot, Pur. | 12        | 50.00 | 5       | 20.83 | 2       | 8.33  | 5       | 20.83 |
|                         | Compare    | 12        | 50.00 | 6       | 25.00 | 5       | 20.83 | 1       | 4.17  |
|                         | Research   | 9         | 37.50 | 7       | 29.17 | 3       | 12.50 | 5       | 20.83 |
|                         | Write      | 10        | 41.67 | 4       | 16.67 | 7       | 29.17 | 3       | 12.50 |
|                         | Lang.      | 7         | 29.17 | 9       | 37.50 | 5       | 20.83 | 3       | 12.50 |
| <a href="#">Grade 6</a> | Words      | 11        | 55.00 | 3       | 15.00 | 2       | 10.00 | 4       | 20.00 |
|                         | Plot, Pur. | 13        | 65.00 | 3       | 15.00 | 1       | 5.00  | 3       | 15.00 |
|                         | Compare    | 12        | 60.00 | 3       | 15.00 | 4       | 20.00 | 1       | 5.00  |
|                         | Research   | 9         | 45.00 | 7       | 35.00 | 2       | 10.00 | 2       | 10.00 |
|                         | Write      | 10        | 50.00 | 2       | 10.00 | 6       | 30.00 | 2       | 10.00 |
|                         | Lang.      | 7         | 35.00 | 7       | 35.00 | 5       | 25.00 | 1       | 5.00  |



# Discovery Education Assessment Sample Reports

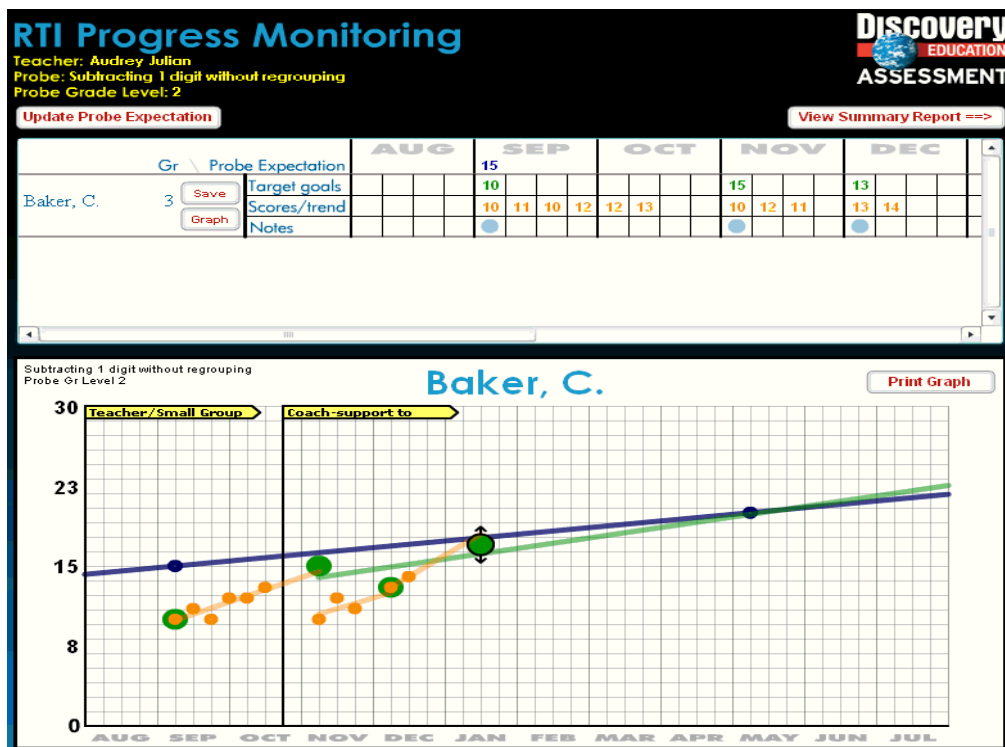
## Disaggregated Reports

Number of Students by Sub-Group

| Subgroup | Number |
|----------|--------|
| No Value | 6      |
| Male     | 19     |
| Female   | 19     |

|                                       | Level 4-5 | Level 3 | Level 2 | Level 1 |
|---------------------------------------|-----------|---------|---------|---------|
| <b>Grade 3 Test 1 Results</b>         |           |         |         |         |
| <b>Words &amp; Phrases in Context</b> |           |         |         |         |
| Group Totals                          | 11        | 7       | 6       | 0       |
| No Value                              | 3         | 1       | 2       | 0       |
| Male                                  | 5         | 3       | 2       | 0       |
| Female                                | 3         | 3       | 2       | 0       |
| <b>Main Idea, Plot, &amp; Purpose</b> |           |         |         |         |
| Group Totals                          | 12        | 5       | 2       | 5       |
| No Value                              | 1         | 1       | 1       | 3       |
| Male                                  | 7         | 2       | 0       | 1       |
| Female                                | 4         | 2       | 1       | 1       |
| <b>Comparisons &amp; Cause/Effect</b> |           |         |         |         |
| Group Totals                          | 12        | 6       | 5       | 1       |
| No Value                              | 2         | 1       | 3       | 0       |
| Male                                  | 6         | 3       | 1       | 0       |
| Female                                | 4         | 2       | 1       | 1       |

## Response To Intervention

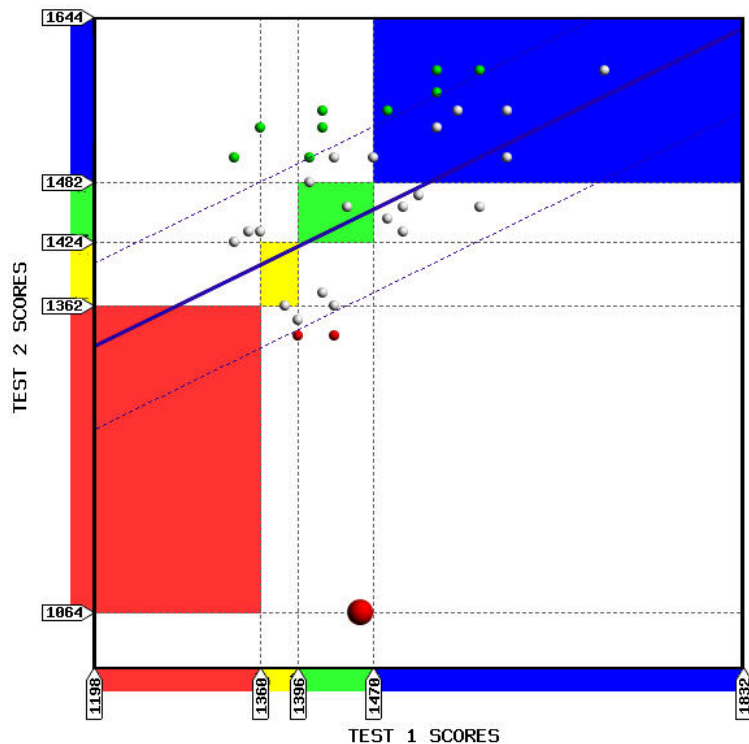




# Discovery Education Assessment Sample Reports

## Proficiency Level and Growth Reports

Comparison of Test 1 to Test 2



| Name              | Test 1 | Test 2 | Growth     |
|-------------------|--------|--------|------------|
| ALLEN, JOHN       | 1192   | 1150   | Below Avg. |
| DONAHUE, TIM      | 1280   | 1301   | Below Avg. |
| HILLIARD, KATE    | 1464   | 1405   | Below Avg. |
| ANDERSON, JAMES   | 1346   | 1354   | Below Avg. |
| GARRISON, JACOB   | 1192   | 1354   | Average    |
| MCGRAW, ABBY      | 1307   | 1447   | Average    |
| JACKSON, LORI     | 1483   | 1546   | Average    |
| BELL, KAREN       | 1333   | 1479   | Average    |
| RICHARDSON, AMBER | 1307   | 1479   | Average    |
| RODRIGUEZ, TINA   | 1280   | 1479   | Average    |
| BAKER, CHRIS      | 1232   | 1462   | Average    |
| RICH, SAMANTHA    | 1464   | 1581   | Average    |
| MATHIS, LARRY     | 1320   | 1546   | Average    |
| CARLISE, MICHAEL  | 1294   | 1546   | Average    |
| MILLER, STEVE     | 1320   | 1581   | Above Avg. |
| GONZALEZ, ALEX    | 1294   | 1581   | Above Avg. |
| JONES, SARA       | 1346   | 1637   | Above Avg. |
| MASON, ISAAC      | 1232   | 1731   | Above Avg. |

Get Excel

Test 1 to Test 2 Change

