



Discovery Education Assessment Sample Reports

Mississippi

Now you don't have to wait until the end of the year to know how your students will perform on the MCT2. **Discovery Education Assessment** provides reliable, state-specific, research-based assessments. In partnership with your school, Discovery Education Assessment focuses on helping students and teachers achieve their maximum potential and improve test results. In addition, the system is easy to use, affordable, and teacher friendly.

Using Discovery Education Assessment, your school will receive test results for individuals, classes, and grade levels from the beginning of the school year. Based on these results, teachers use resources and tools to customize individual and group learning plans.

Specifically, teachers receive the following information from each predictive test:

- Prediction of proficiency for reading, language arts, and math
- Mastery levels for MCT2 objectives
- Measurement of the *Mississippi Course of Study*
- Item analysis detailing percent correct, item difficulty level, and content measured
- Growth score for monitoring AYP goals
- Individual student item answers with total items correct and percentage by domain

Discovery Education Assessment reports are the most state-specific results available. No other formative assessment offers Mississippi-specific predictive assessment. Reports are specifically based on Mississippi's terms and definitions. Proficiency is identified as *Minimal*, *Basic*, *Proficient*, and *Advanced*. Assessments measure progress throughout the year toward individual learning goals and state expectations. In addition, all information is provided at the following levels:

Student → Class → Grade → School → District

Reports are also available for the following subgroups: Gender, Ethnicity, LEP, Students with Disabilities, and Economically Disadvantaged. Additional subgroups can be created based on your specific needs.

Discovery Education Assessment helps you transform data into information, information into knowledge, and knowledge into action.

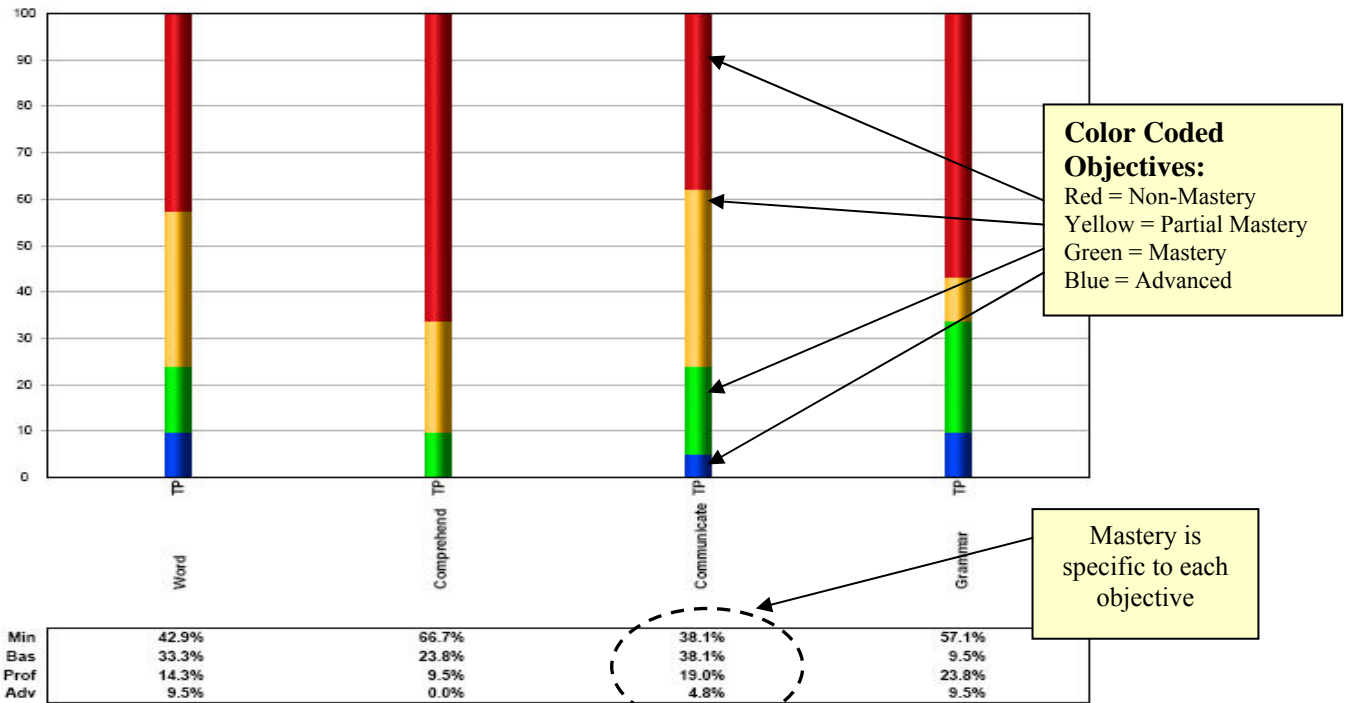


Discovery Education Assessment Sample Reports

Class and Grade Summary Report

Test P / 21 students

Proficiency By Skill
Minimal
Basic
Proficient
Advanced



Color Coded Objectives:
Red = Non-Mastery
Yellow = Partial Mastery
Green = Mastery
Blue = Advanced

Mastery is specific to each objective

Student Report

Test P of PAB (21 students)
Teacher: 1 MSDemoGradeSix
Class: Grade 6 Reading
Grade: Grade 6
Subject: Reading/Language Arts

Subject Proficiency
Minimal (0-13 correct)
Basic (14-20 correct)
Proficient (21-29 correct)
Advanced (30-34 correct)
determined by # correct

Individual students within class

Student performance on each objective

Proficiency level by student

	Word	Comprehend	Communicate	Grammar	
	Bas		Bas	Bas	Bas 15
	Min		Min	Min	Min 2
	Min		Min	Min	Min 3
	Bas		Bas	Min	Min 11
	Bas		Min	Min	Min 5
	Min		Prof	Min	Min 13
Green, C	Prof	Bas	Prof	Prof	Prof 23
Hall, E	Min	Min	Bas	Min	Min 4
Hernandez, E	Min	Min	Min	Min	Min 1
Hill, M	Bas	Prof	Adv	Adv	Prof 29
Jackson, E	Adv	Bas	Min	Prof	Bas 17
King, G	Bas	Min	Min	Min	Min 8
Lee, T	Min	Min	Bas	Min	Min 9
Lewis, J	Min	Min	Bas	Bas	Min 7
Lopez, J	Adv	Bas	Prof	Prof	Prof 22
Rodriguez, S	Min	Min	Min	Min	Min 0
Scott, C	Bas	Prof	Min	Prof	Bas 17
Thomas, K	Prof	Bas	Prof	Adv	Prof 23
Walker, S	Min	Min	Bas	Min	Min 5
Wright, E	Prof	Min	Bas	Min	Min 9
Young, E	Bas	Min	Bas	Prof	Bas 14





Discovery Education Assessment Sample Reports

Objective Report

Test P of PAB (21 students)
Teacher: 1 MSDemoGradeSix
Class: Grade 6 Reading
Grade: Grade 6
Subject: Reading/Language Arts

State Curriculum Code, Standard, Subskill

Color coding indicates overall class mastery by item

Item difficulty level

Item	Right %	Wrong %	Code	Reporting Category	Reporting Subcategory	DOK	Level
MS 2008 State Reporting Categories							
Reading/Language Arts							
1	43	57	6.2.b	Comprehension Strategies	6.2.b Inference & Conclusions DOK 2	2	Easy
2	33	67	6.2.e	Comprehension Strategies	6.2.e Fact/Opinion DOK 2	2	Easy
3	38	62	6.2.b	Comprehension Strategies	6.2.b Inference & Conclusions DOK 2	3	Easy
4	43	57	6.1.b	Word Meaning	6.1.b Word Meaning DOK 1	1	Easy
5	29	71	6.2.c	Comprehension Strategies	6.2.c Summarizing DOK 2	2	Mod.
6	33	67	6.1.a	Word Meaning	6.1.a Roots/Affixes DOK 2	1	Hard

Answer Report

Test P of PAB (21 students)
Teacher: 1 MSDemoGradeSix
Class: Grade 6 Reading
Grade: Grade 6
Subject: Reading/Language Arts

Answer key

Actual student response

Growth Score indicates estimated percentage of skills mastered at grade level for each student

Student	1	2	3	4	5	6	7	8	9	10	11	12	13	14	15	16	17	18	19	20	21	22	23	24	25	26	27	28	29	30	31	32	33	34	Num correct	% correct	Res
Adams, J	C	A	D	B	D	B	B	B	B	B	C	B	A	A	A	B	C																		15	44%	
Allen, R	A	B	C	C	C	A	C	B	A	B	B	D	B	D	B	A	A	A	B	C	D	D	A	A	C	C	B	C	B	C	B	A	B	A	2	6%	
Carter, F	C	D	C	D	B	D	B	D	D	C	B	B	A	D	C	C	C	F	D	D	C	B	B	D	D	D	D	C	B						3	9%	
Clark, A	B	B	A	A	B	C	B	A	A	C	A	A	B	B	B	A	B	C	B	A	A	C	A	B	D	B	B	A	A	B	D	A	B	A	11	32%	
Elhers, M T	B	D	B	D	D	B	B	B	C	D	A	D	C	B	C	B	E	D	B	D															5	15%	
Gonzalez, M	B	C	D	C	A	D	D	B	C	B	B	B	A	B	A	C	C	A	A	C	B	B	A	A	A	B	B	A	B	A	A	B	B	12	35%		
Green, C	B	A	D	A	B	B	D	A	C	A	B	A	C	A	A	C	C	C	B	A	D	B	C	B	B	A	D	C	C	B				23	68%	568 Prof	
Hall, E	C	B	A	A	B	A	B	B	C	A	A	B	B	C	B	B	A	A	B	A	A	C	C	D	A	A	B	A	B	A	B	C		4	12%	512 Min	
Hernandez, E	C	C	C	B	C	C	C	C	B	D	A	A	D	D	C	C	D	D	B	C	B	D	C	C	C	D	D	D	B	C	D	C		1	3%	503 Min	
Hill, M	A	A	B	D	D	B	D	D	A	C	B	C	A	C	A	D	C	C	A	B	C	C	B	B	D	D	C	A	C	C	D	C	A	B	29	85%	585 Prof
Jackson, E	B	C	D	A	B	B	D	B	A	A	B	C	C	B	A	A	C	A	B	A	A	B	C	C	A	D	A	C	B	D	C	B	B	17	50%	550 Bas	
King, G	A	B	A	A	A	A	D	B	A	A	C	B	B	B	A	A	B	B	A	A	B	B	A	A	B	A	B	C	B	A	B	D	B	C	8	24%	524 Min
Lee, T	B	B	A	B	D	C	D	B	A	A	A	A	C	B	B	A	B	B	C	A	C	C	B	B	D	A	B	A	B	A	C			9	26%	526 Min	
Lewis, J	C	D	A	C	C	A	C	A	C	A	B	C	B	D	A	B	B	A	B	C	A	D	D	C	B	A	B	A	B	D	C	A	A	9	26%	526 Min	
Lopez, J	B	C	D	A	A	B	D	D	B	C	B	A	A	B	B	A	C	C	B	B	C	C	A	C	D	D	C	A	A	A	D	A	B	B	22	65%	560 Prof
Rodriguez, S	A	B	A	B	B	D	B	B	B	A	C	A	D	D	B	C	D	D	B	D	D	D	D	D	B	B	A	C	A	C	B	B	C	D	0	0%	500 Min
Scott, C	A	A	B	A	D	A	B	B	A	C	B	C	A	C	A	D	C	A	B	A	B	A	C	B	D	A	A	B	C	B	A	C	A	B	17	50%	550 Bas
Thomas, K	B	A	D	A	D	D	B	A	C	C	B	B	A	D	C	A	C	B	B	A	B	B	A	D	C	A	C	B	D	C	A	B		23	68%	568 Prof	



Discovery Education Assessment Sample Reports

Student Subskill Report

Reporting Categories	Word				Comprehend												Communicate												Grammar				Proficient						
	Question Number	4	6	14	17	1	2	3	5	8	9	10	11	12	13	15	16	18	19	20	21	22	23	24	25	26	27	28	29	30	31	32	33	34	Proficient	Proficiency Percent Correct	Total Number Correct	Growth Scale	
State Code																																							
Item Difficulty	E	H	M	M	E	E	E	M	M	M	H	M	M	M	H	H	H	H	M	E	M	M	H	E	E	M	H	M	E	M	M	E	H	M	Proficient				
Correct Answer	A	B	B	C	B	A	D	D	D	A	C	B	C	A	A	D	D	C	A	B	C	C	C	B	B	D	C	A	C	A	D	C	A	B					
Clark, A	B	A			C												B	A									B	A	B						15	44%	15	0	
Elhers, M T	C	A	D	A	A	B	C	C	B								C	A	B	C	D	D	A	A	C	C	B	C	B	C	B	A	B	A	2	6%	2	0	
Gonzalez, M	D	D	A		C	D	C	B	B	D	D	C	B	B	D	C	B	D	C	C	B	D	D	D	C	B	B	D	D		D	C			3	9%	3	0	
Green, C		C																																	11	32%	11	0	
Hall, E	D				D	B		B	C	D	A	D	C	C	B		B	B	D		D	X	X	X	X	X	X	X	X	X	X	X	X	X	5	15%	5	0	
Hernandez, E	C	A	A		C			A																			B	B	A	B	A	A	B		12	35%	12	0	
Hill, M		C																																	23	68%	23	0	
Jackson, E		A	C	A	C	B	A	B	B	C	A	A	B	B	B	B	B	A			A	A	C	C		A	A	B	A	B	A	A	B	C	4	12%	4	0	
King, G	B	C	D		C	C	C	C	B	D	A	A	D	C	C		C	D	B	C	B	D	C	C		D	D	D	B	C	D	C	C		1	3%	1	0	
Lee, T	D		C		A																								C						29	85%	29	0	
Lee, T																											A								17	50%	17	0	
Lee, T		A	A		A			B	A		B	A	C	B	C	B	B	A	A	B		A	A	A	A	B		B	A	B		B	B	C	8	24%	8	0	
Lee, T	B	C	C	A		B	A				B	A	A	A	B	B		B	B	C	A		C	B		A	A	B	B		B	A	C	C	9	26%	9	0	

MS-specific standards

Communicate

State proficiency prediction by student

Individual student performance

Proficient

Proficiency Percent Correct

Total Number Correct

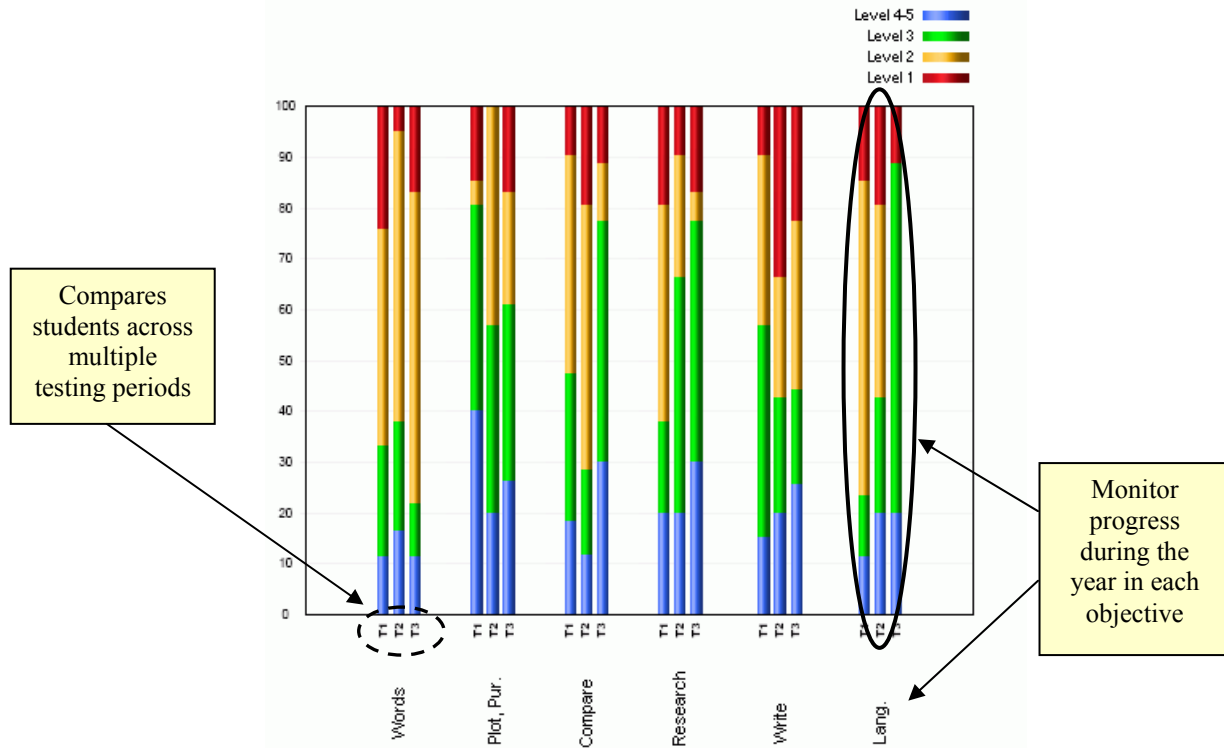
Growth Scale





Discovery Education Assessment Sample Reports

Comparison Report



Individual Student Report

Student: Oberman, Alyssa
 Teacher: Jason Kemp
 Class: Kemp read/math
 Grade: 3
 Subject: Reading/Lang Arts

Compare across multiple test periods

Level 4-5
 Level 3
 Level 2
 Level 1

Great for Parent Conferences, Tutors, IEPs and Student Files

Skills	Test 1	Test 2	Test 3	Description of Skills
Words	Lv 3	Lv 3	Lv 2	Using context clues, prefixes, suffixes, root words, and word relationships, the student identifies the meaning of a word or phrase in a passage and/or graphic. Simple analysis and/or direct inference may be required to comprehend the meaning of the word or phrase.
Plot, Pur.	Lv 3	Lv 3	Lv 4-5	The student identifies the following from a passage: main idea or essential message, relevant supporting details and facts, and/or chronological order or other sequence of events.
Compare	Lv 3	Lv 3	Lv 4-5	The student recognizes the use of comparison and contrast in a text.
Research	Lv 3	Lv 1	Lv 3	The student identifies meanings through the process of selecting and/or organizing information from a single text that contains multiple representations of information. The complexity of the presentation will be appropriate to third grade. This process may involve application, analysis, synthesis, and/or evaluation appropriate to third grade.
Write	Lv 3	Lv 3	Lv 4-5	The student uses the writing processes effectively to communicate.
Lang.	Lv 3	Lv 1	Lv 2	Use appropriate conventions of language to communicate effectively in writing

Description of objectives

Report shows student proficiency for each assessment across all objectives

Reading/Lang Arts			
	Test 1	Test 2	Test 3
Number Correct	21	15	21
Percent Correct	84	60	84
Proficiency Score	284	360	384

Proficiency Levels
 Level 1
 Level 2
 Level 3
 Level 4-5
 determined by # correct

Proficiency and Growth Score Data





Discovery Education Assessment Sample Reports

District Reports School Comparison

	Advanced		Proficient		Basic		Minimal		Percent Prof+	Totals		
	#	%	#	%	#	%	#	%		#	%	
Test 1 Results												
All Schools	3	10.0	4	13.3	7	23.3	16	53.3	23.3	30	100	
Demo MS	3	10.3	4	13.8	7	24.1	15	51.7	24.1	29	100	
Test 2 Results												
All Schools	1	5.3	6	31.6	9	47.4	3	15.8	36.8	19	100	
Demo MS	1	5.6	6	33.3	9	50.0	2	11.1	38.9	18	100	

Comparison Table: Summary of Students by Skill

	Total Students	Advanced		Proficient		Basic		Minimal		Total			
		#	%	#	%	#	%	#	%	#	%		
Test 1 Results													
Numbers	All Schools	30	2	6.7	9	30.0	5	16.7	14	46.7	30	100	
12 items	Demo MS	29	2	6.9	9	31.0	5	17.2	13	44.8	29	100	
Algebra	All Schools	30	2	6.7	9	30.0	4	13.3	15	50.0	30	100	
5 items	Demo MS	29	2	6.9	9	31.0	4	13.8	14	48.3	29	100	
Geometry	All Schools	30	6	20.0	5	16.7	7	23.3	12	40.0	30	100	
5 items	Demo MS	29	6	20.7	5	17.2	7	24.1	11	37.9	29	100	
Measurement	All Schools	30	6	20.0	8	26.7	6	20.0	10	33.3	30	100	
5 items	Demo MS	29	6	20.7	8	27.6	6	20.7	9	31.0	29	100	
Analysis	All Schools	30	4	13.3	14	46.7	8	26.7	4	13.3	30	100	
5 items	Demo MS	29	4	13.8	13	44.8	8	27.6	4	13.8	29	100	

Drill Down Reports

District Report for MS Demo County, MS Drilldown Report for Demo MS by Skill Reading/Language Arts

Advanced		Proficient		Basic		Minimal	
#	%	#	%	#	%	#	%

Test 1 Results MS Grade 3 Reading (PAB)

Grade 3	Word	4	13.79	6	20.69	12	41.38	7	24.14	
	Comprehend	2	6.90	2	6.90	16	55.17	9	31.03	
	Communicate	2	6.90	7	24.14	8	27.59	12	41.38	
	Grammar	2	6.90	9	31.03	7	24.14	11	37.93	
Grade 6	Word	2	9.52	3	14.29	7	33.33	9	42.86	
	Comprehend	0	0.00	2	9.52	5	23.81	14	66.67	
	Communicate	1	4.76	4	19.05	8	38.10	8	38.10	
	Grammar	2	9.52	5	23.81	2	9.52	12	57.14	

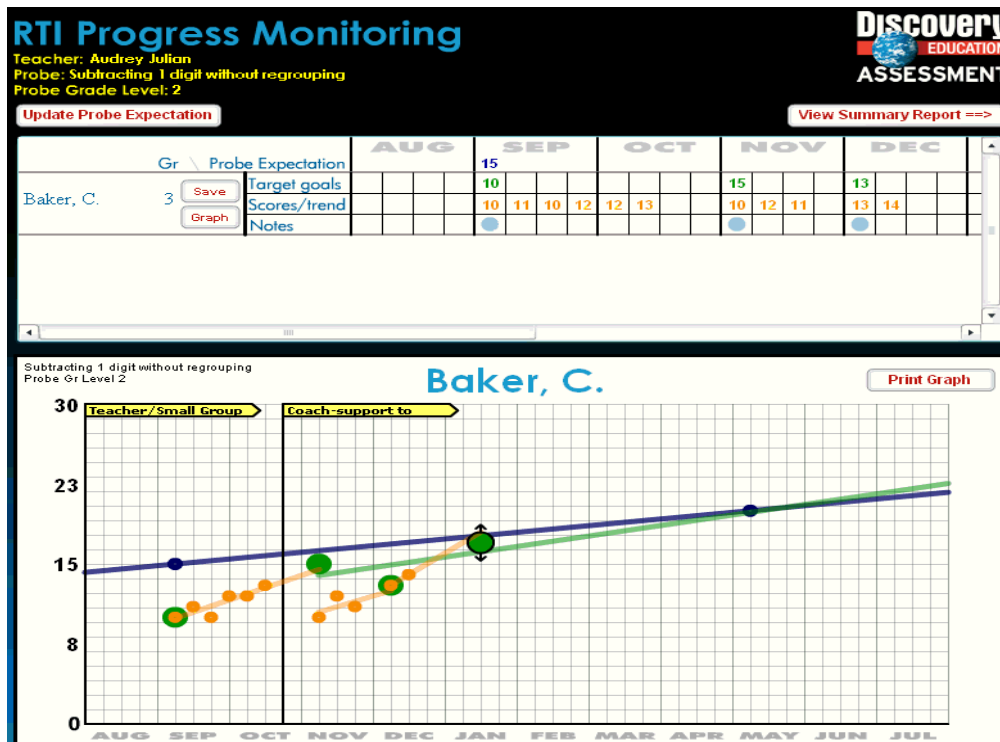


Discovery Education Assessment Sample Reports

Disaggregated Reports

	Advanced	Proficient	Basic	Minimal
Grade 3 Test 1 Results				
Word Meaning				
Group Totals	4	6	12	7
Male	2	3	7	4
Female	2	3	5	3
Comprehension Strategies				
Group Totals	2	2	16	9
Male	2	1	9	4
Female	0	1	7	5
Communicate Ideas				
Group Totals	2	7	8	12
Male	2	4	3	7
Female	0	3	5	5
Grammar				
Group Totals	2	9	7	11
Male	2	4	2	8
Female	0	5	5	3

Response To Intervention

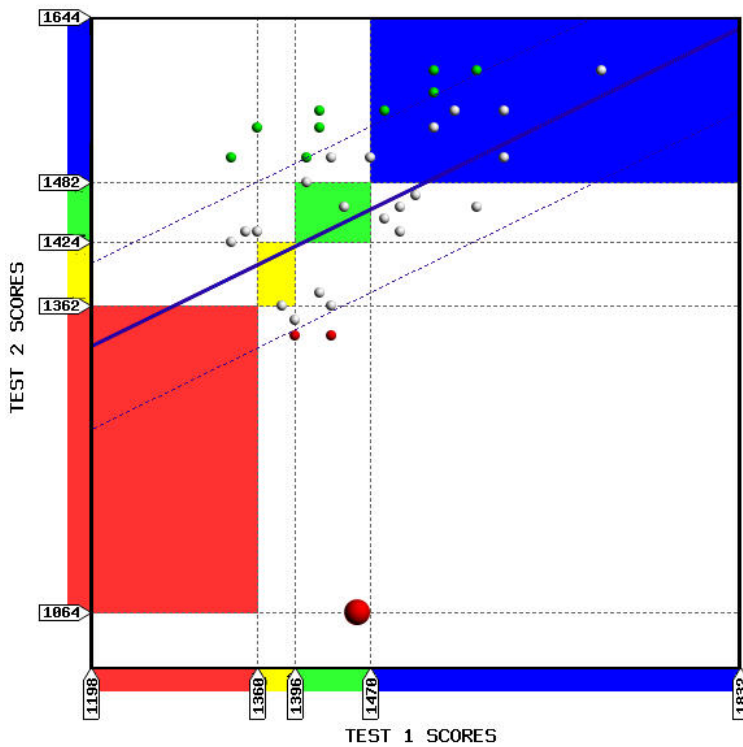




Discovery Education Assessment Sample Reports

Proficiency Level and Growth Reports

Comparison of Test 1 to Test 2



Name	Test 1	Test 2	Growth
ALLEN, JOHN	1192	1150	Below Avg.
DONAHUE, TIM	1280	1301	Below Avg.
HILLIARD, KATE	1464	1405	Below Avg.
ANDERSON, JAMES	1346	1354	Below Avg.
GARRISON, JACOB	1192	1354	Average
MCGRAW, ABBY	1307	1447	Average
JACKSON, LORI	1483	1546	Average
BELL, KAREN	1333	1479	Average
RICHARDSON, AMBER	1307	1479	Average
RODRIGUEZ, TINA	1280	1479	Average
BAKER, CHRIS	1232	1462	Average
RICH, SAMANTHA	1464	1581	Average
MATHIS, LARRY	1320	1546	Average
CARLISE, MICHAEL	1294	1546	Average
MILLER, STEVE	1320	1581	Above Avg.
GONZALEZ, ALEX	1294	1581	Above Avg.
JONES, SARA	1346	1637	Above Avg.
MASON, ISAAC	1232	1731	Above Avg.

[Get Excel](#)

Test 1 to Test 2 Change

