



Discovery Education Assessment Sample Reports

Missouri

Now you don't have to wait until the end of the year to know how your students will perform on the MAP. **Discovery Education Assessment** provides reliable, state-specific, research-based assessments. In partnership with your school, Discovery Education Assessment focuses on helping students and teachers achieve their maximum potential and improve test results. In addition, the product is easy to use, affordable, and teacher friendly.

Using Discovery Education Assessment, your school will receive test results for individuals, classes, and grade levels from the beginning of the school year. Based on these results, teachers use resources and tools to customize individual and group learning plans.

Specifically, teachers receive the following information from each predictive test:

- Prediction of proficiency for reading, language arts, and math
- Mastery levels for MAP objectives
- Measurement of the *Show Me Standards*
- Item analysis detailing percent correct, item difficulty level, and content measured
- Growth score for monitoring AYP goals
- Individual student item answers with total items correct and percentage by domain

Discovery Education Assessment reports are the most state-specific results available. No other formative assessment offers Missouri-specific predictive assessment. Reports are specifically based on Missouri's terms and definitions. Proficiency is identified as *Below Basic*, *Basic*, *Proficient*, and *Advanced*. Assessments measure progress throughout the year toward individual learning goals and state expectations. In addition, all information is provided at the following levels:

Student → Class → Grade → School → District

Reports are also available for the following subgroups: Gender, Ethnicity, LEP, Students with Disabilities, and Economically Disadvantaged. Additional subgroups can be created based on your specific needs.

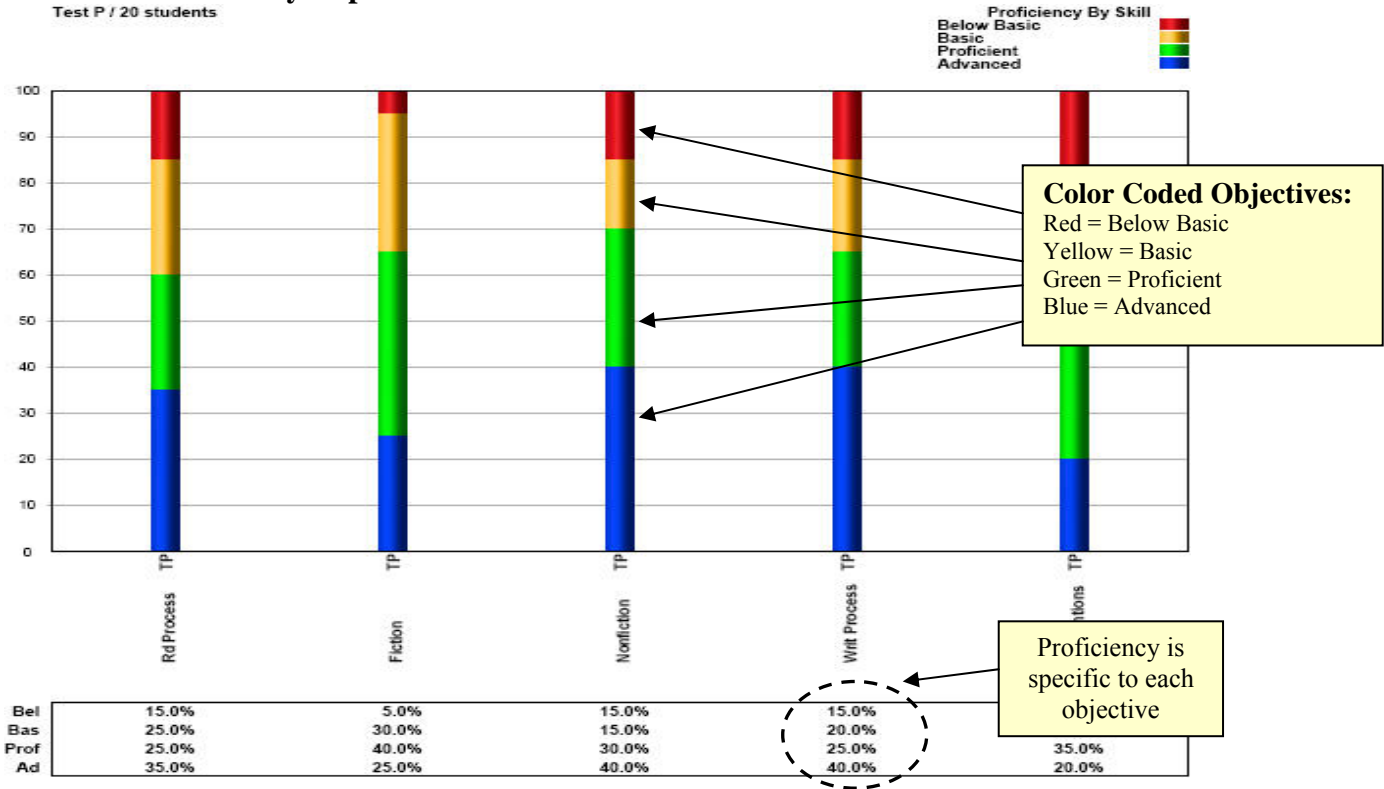
Discovery Education Assessment helps you transform data into information, information into knowledge, and knowledge into action.



Discovery Education Assessment Sample Reports

Class and Grade Summary Report

Test P / 20 students



Student Report

Test P of PAB (20 students)
 Teacher: 1 MODemoGradeSix
 Class: Grade 6 Reading
 Grade: Grade 6
 Subject: Reading/Language Arts

Individual students within class

Student performance on each objective

Subject Proficiency
 Below Basic (0-9 correct)
 Basic (10-18 correct)
 Proficient (19-23 correct)
 Advanced (24-34 correct)
 determined by # correct

Proficiency level by student

	Rd Process	Fiction	Nonfiction	Writ Process	Conventions		
Adams, J	Prof	Prof	Prof	Bel	Bas	Bas	15
Allen, R	Prof	Ad	Ad	Ad	Prof	Ad	25
Carter, F	Ad	Ad	Ad	Ad	Prof	Ad	27
Clark, A	Bas	Prof	Bel	Prof	Bel	Bas	11
Gonzalez, M	Bas	Bas	Ad	Bel	Bel	Bas	12
Green, C	Ad	Prof	Prof	Prof	Prof	Prof	23
Hall, E	Bel	Bel	Bel	Bas	Bel	Bel	8
Hernandez, E	Ad	Ad	Ad	Ad	Ad	Ad	31
Hill, M	Ad	Ad	Ad	Ad	Ad	Ad	32
Jackson, E	Bas	Bas	Prof	Prof	Prof	Bas	17
King, G	Bel	Bas	Bel	Bas	Bel	Bel	8
Lee, T	Bel	Bas	Bas	Bas	Bel	Bel	9



Discovery Education Assessment Sample Reports

Objective Report

Test P of PAB (20 students)
Teacher: 1 MODemoGradeSix
Class: Grade 6 Reading
Grade: Grade 6
Subject: Reading/Language Arts

State Curriculum Code, Standard, Subskill

Item difficulty level

Q.#	Ans	Right #	Wrong #	Code	Reporting Category	Reporting Subcategory	Level
MO Reporting Categories							
Reading/Language Arts							
1	B	13	7	1H	Reading: Reading Process	1H Post-Reading	Easy
2	A	11	9	1E	Reading: Reading Process	1E Vocabulary	Mod.
3	D	14	6	3C	Reading: Nonfiction	3C Text Elements	Mod.
4	A	14	6	1G	Reading: Reading Process	1G During Reading	Mod.
5	C	10	10	3C	Reading: Nonfiction	3C Text Elements	Mod.
6	B	12	8	1H	Reading: Reading Process	1H Post-Reading	Hard
7	A	12	8	3C	Reading: Nonfiction	3C Text Elements	Easy
8	C	12	8	3A	Reading: Nonfiction	3A Text Features	Hard

Color coding indicates overall class mastery by item

Answers Report

Test P of PAB (20 students)
Teacher: 1 MODemoGradeSix
Class: Grade 6 Reading
Grade: Grade 6
Subject: Reading/Language Arts

Actual student response

Answer key

Subject Proficiency
Below Basic (0-9 correct) [Red]
Basic (10-18 correct) [Yellow]
Proficient (19-23 correct) [Green]
Advanced (24-34 correct) [Blue]
determined by # correct

Student	1	2	3	4	5	6	7	8	9	10	11	12	13	14	15	16	17	18	19	20	21	22	23	24	25	26	27	28	29	30	31	32	33	34	Num. correct	% correct	Gr. + % correct	Profic. Level
Adams, J	B	A	D	A	B	C	B	B	A	D	A	C	B	A	C	D	D	C	C	D	C	B	D	C	B	C	D	C	A	B	B	D	A	A	15	44%	544	Bas
Allen, R	A	A	D	C	C	B	B	B	A	C	D	B	A	C	B	C	D	C	C	B	B	B	C	D	C	B	D	C	A	C	D	B	C	25	74%	574	Ad	
Carter, F	A	A	D	A	C	B	A	C	B	A	C	D	A	A	C	B	B	D	C	C	A	B	B	C	D	D	B	D	C	B	D	D	B	C	28	82%	582	Ad
Clark, A	B	C	C	A	A	B	D	B	A	D	B	B	A	D	A	C	D	A	B	C	B	A	C	D	C	A	D	B	D	C	B	D	B	11	32%	532	Bas	
Gonzalez, M	B	B	D	B	B	D	A	C	D	A	C	B	B	B	A	A	D	D	C	A	A	A	B	B	B	C	A	C	D	D	A	B	D	A	12	35%	535	Bas
Green, C	B	A	D	A	D	B	A	C	B	A	A	B	A	B	C	A	D	D	C	B	A	B	B	A	D	B	B	B	D	B	C	D	A	23	68%	568	Prof	
Hall, E	D	B	C	A	D	A	C	A	D	B	B	B	C	B	A	D	B	C	C	C	B	D	D	B	D	C	D	C	B	A	D	B	E	4	12%	512	Bel	
Hernandez, E	B	B	D	A	C	B	A	C	B	A	C	D	A	A	C	B	D	D	C	C	B	B	C	D	B	B	D	C	B	C	D	C	D	31	91%	591	Ad	
Hill, M	B	A	D	A	C	B	A	C	B	A	C	D	A	A	C	C	B	D	D	C	C	A	B	B	C	D	D	B	D	C	D	C	D	32	94%	594	Ad	
Jackson, E	B	C	D	A	B	B	A	B	B	C	C	D	C	A	C	A	D	C	A	D	B	A	D	A	B	D	D	D	C	D	C	D	C	17	50%	550	Bas	
King, G	D	A	C	A	A	A	C	C	D	C	A	B	C	A	D	D	B	C	B	C	B	A	A	C	C	C	B	C	A	D	C	E	E	8	24%	524	Bel	
Lee, T	B	B	B	B	C	D	A	C	A	C	B	B	A	B	B	A	B	B	A	B	C	D	B	B	D	C	C	D	D	B	D	B	A	C	9	26%	526	Bel
Lewis, J	B	B	D	A	C	B	A	C	B	A	C	D	A	A	C	B	D	D	C	C	A	B	B	C	D	D	B	D	C	D	C	D	C	D	32	94%	594	Ad
Lopez, J	B	C	D	A	A	B	A	C	A	A	C	B	A	A	A	A	D	D	D	C	A	B	A	A	D	D	B	D	D	B	C	B	D	A	22	65%	565	Prof

Growth Score indicates estimated percentage of skills mastered at grade level for each student



Discovery Education Assessment Sample Reports

Student Subskill Report

Reporting Categories	Read Process								Fiction								Nonfiction								Write Process				Conventions				Number Correct (out of 34)	Percent Correct	Growth Scale			
	1	2	4	6	16	19	21	22	9	10	13	14	15	18	20	24	3	5	7	8	11	12	17	23	25	26	27	28	29	30	31	32				33	34	
Question Number																																						
State Code																																						
Item Difficulty	1H	1E	1G	1H	1I	1C	1F	1G	2C	2C	2C	2A	2C	2A	2B	2B	3C	3C	3C	3A	3C	3D	3B	3A	4A	4A	4A	4A	5E	5B								
Correct Answer	B	A	A	B	B	C	A	B	B	A	A	A	C	D	C	C	D	C	A	C	C	D	D	B	D	D	B	D	C	B								
Adams, J	A	B		D		C			D		C								B	A		B		D	B	C	D	C	A						15	44%	15	0
Allen, R	A		C				B				B									B			C				C		A						25	74%	25	0
Carter, F	A											C								A		B							D						28	82%	28	0
... A		C	D	A	A	C					B	D	B				C	A	B	D	B	C	A		C	A			B	D		B	D		11	32%	11	0
... alez, M		B	B	D	A			A	D	B	B	A	A	B			B				B				B	C	A	C	D	D	A	B	D		12	35%	12	0
... n, C					A						B			B	A		D			A	B				B	B	D						A		23	68%	23	0
Hall, E	D	B		A	D		B	D	D	B	C	B	A	C	B		C	D	C	A	B	B	B	D	C	D	C	B	A	D	B	D	C		4	12%	4	0
Hernandez, E		B					C																		B										31	91%	31	0
Kill, M											C																D								32	94%	32	0
Jackson, E		C		A	A	B	A		C	C			C	D	A		B	B					D		B	D			D		A				17	50%	17	0
Kling, G	D			A	D	B	B	A	D	C	C		D	C			C	A	C		A	B	B	A	C	C	C	A	D		B	A	B		8	24%	8	0
Lee, T		B	B	D	A	D	B		A	C		B	B	C	B		B				B	B	B	D	C	D	B		D		A	C	A	C	9	26%	9	0
Lewis, J		B																									O								32	94%	32	0
Lopez, J		C			A	D			A			A		A			A				B	A							D			B	D		22	65%	22	0
Rodriguez, S			B	A		A	A		C	C	C		B											A			A	C	D	A					21	62%	21	0
Scott, C	A		A		A	B	A				B		O	B			B		C	A			D		C	A	B		O	B					17	50%	17	0
Thomas, K				A	D	B	D		A	C	B		C								B								D						23	68%	23	0

MO-specific standards

Nonfiction

State proficiency prediction by student

Individual student performance

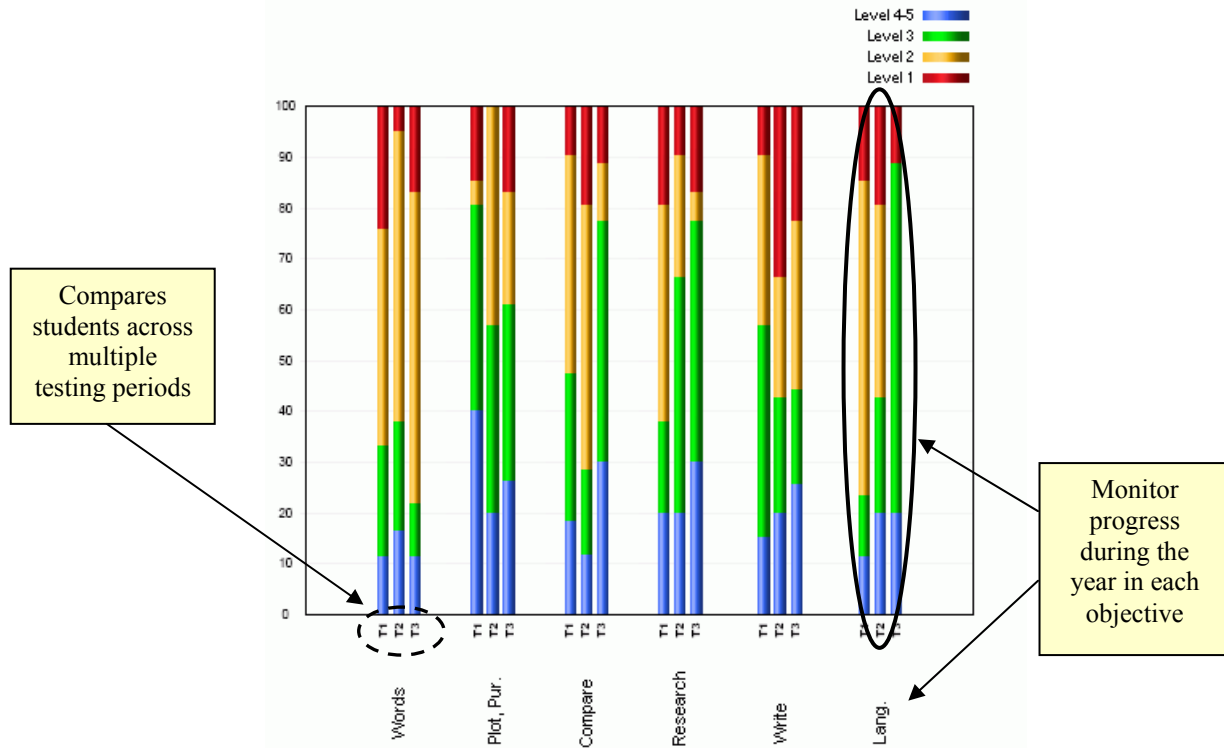
Jackson, E





Discovery Education Assessment Sample Reports

Comparison Report



Individual Student Report

Student: Oberman, Alyssa
Teacher: Jason Kemp
Class: Kemp read/math
Grade: 3
Subject: Reading/Lang Arts

Skills	Test 1	Test 2	Test 3	Description of Skills
Words	Lv 3	Lv 3	Lv 2	Using context clues, prefixes, suffixes, root words, and word relationships, the student identifies the meaning of a word or phrase in a passage and/or graphic. Simple analysis and/or direct inference may be required to comprehend the meaning of the word or phrase.
Plot, Pur.	Lv 3	Lv 3	Lv 4-5	The student identifies the following from a passage: main idea or essential message, relevant supporting details and facts, and/or chronological order or other sequence of events.
Compare	Lv 3	Lv 3	Lv 4-5	The student recognizes the use of comparison and contrast in a text.
Research	Lv 3	Lv 1	Lv 3	The student identifies meanings through the process of selecting and/or organizing information from a single text that contains multiple representations of information. The complexity of the presentation will be appropriate to third grade. This process may involve application, analysis, synthesis, and/or evaluation appropriate to third grade.
Write	Lv 3	Lv 3	Lv 4-5	The student uses the writing processes effectively to communicate.
Lang.	Lv 3	Lv 1	Lv 2	Use appropriate conventions of language to communicate effectively in writing

Reading/Lang Arts			
	Test 1	Test 2	Test 3
Number Correct	21	15	21
Percent Correct	84	60	84
Proficiency Score	284	360	384

Proficiency Levels
 Level 1 (red)
 Level 2 (yellow)
 Level 3 (green)
 Level 4-5 (blue)
 determined by # correct

Proficiency and Growth Score Data

Great for Parent Conferences, Tutors, IEPs and Student Files

Description of objectives

Report shows student proficiency for each assessment across all objectives





Discovery Education Assessment Sample Reports

District Reports School Comparison

Comparison Table: Summary of Students by Subject

	Level 4.5		Level 3		Level 2		Level 1		Percent Lv 3+	Totals		
	#	%	#	%	#	%	#	%		#	%	
Test 1 Results												
All Schools	7	28.0	9	36.0	2	8.0	7	28.0	64.0	25	100	
Demo	7	29.2	9	37.5	2	8.3	6	25.0	66.7	24	100	

Comparison Table: Summary of Students by Skill

	Total Students	Level 4.5		Level 3		Level 2		Level 1		Total #	Total %	
		#	%	#	%	#	%	#	%			
Test 1 Results												
Words	All Schools	25	11	44.0	7	28.0	6	24.0	1	4.0	25	100
5 items	Demo	24	11	45.8	7	29.2	6	25.0	0	0.0	24	100
Plot, Pur.	All Schools	25	12	48.0	5	20.0	3	12.0	5	20.0	25	100
8 items	Demo	24	12	50.0	5	20.8	2	8.3	5	20.8	24	100
Compare	All Schools	25	12	48.0	6	24.0	6	24.0	1	4.0	25	100
8 items	Demo	24	12	50.0	6	25.0	5	20.8	1	4.2	24	100
Research	All Schools	25	9	36.0	7	28.0	4	16.0	5	20.0	25	100
4 items	Demo	24	9	37.5	7	29.2	3	12.5	5	20.8	24	100
Write	All Schools	25	10	40.0	4	16.0	7	28.0	4	16.0	25	100

Drill Down Reports

		Level 4.5		Level 3		Level 2		Level 1		
		#	%	#	%	#	%	#	%	
Test 1 Results										
Grade 3	Words	11	45.83	7	29.17	6	25.00	0	0.00	
	Plot, Pur.	12	50.00	5	20.83	2	8.33	5	20.83	
	Compare	12	50.00	6	25.00	5	20.83	1	4.17	
	Research	9	37.50	7	29.17	3	12.50	5	20.83	
	Write	10	41.67	4	16.67	7	29.17	3	12.50	
	Lang.	7	29.17	9	37.50	5	20.83	3	12.50	
Grade 6	Words	11	55.00	3	15.00	2	10.00	4	20.00	
	Plot, Pur.	13	65.00	3	15.00	1	5.00	3	15.00	
	Compare	12	60.00	3	15.00	4	20.00	1	5.00	
	Research	9	45.00	7	35.00	2	10.00	2	10.00	
	Write	10	50.00	2	10.00	6	30.00	2	10.00	
	Lang.	7	35.00	7	35.00	5	25.00	1	5.00	



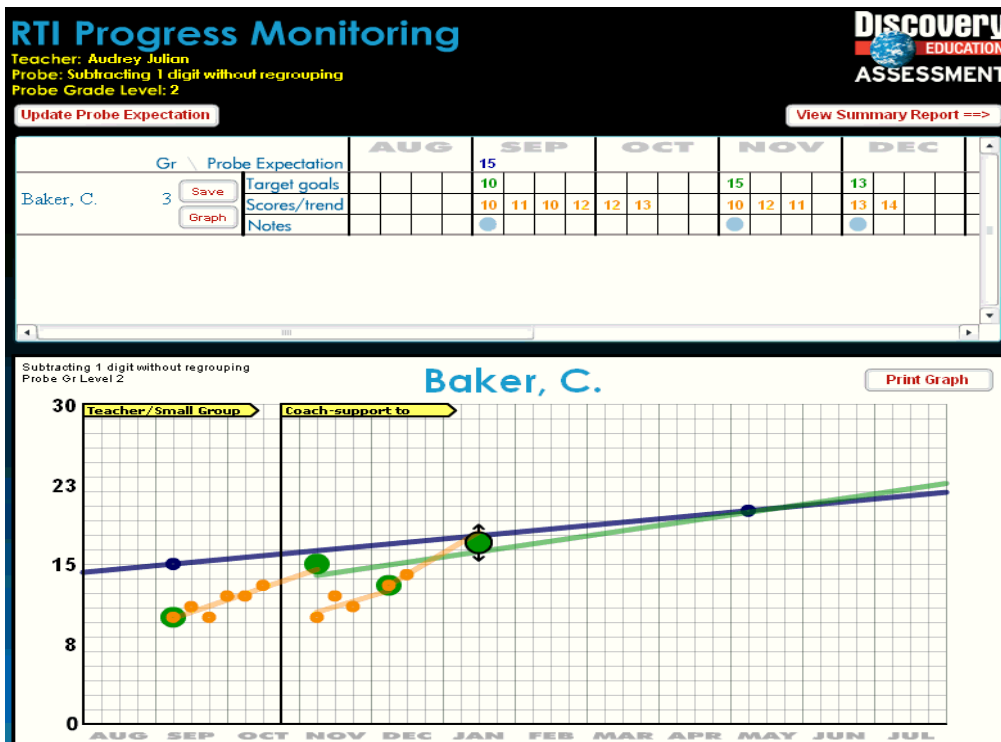
Discovery Education Assessment Sample Reports

Disaggregated Reports

Number of Students by Sub-Group	
Subgroup	Number
No Value	6
Male	19
Female	19

	Level 4	Level 3	Level 2	Level 1
Grade 3 Test 1 Results				
Words & Phrases in Context				
Group Totals	11	7	6	0
No Value	3	1	2	0
Male	5	3	2	0
Female	3	3	2	0
Main Idea, Plot, & Purpose				
Group Totals	12	5	2	5
No Value	1	1	1	3
Male	7	2	0	1
Female	4	2	1	1
Comparisons & Cause/Effect				
Group Totals	12	6	5	1
No Value	2	1	3	0
Male	6	3	1	0
Female	4	2	1	1

Response To Intervention

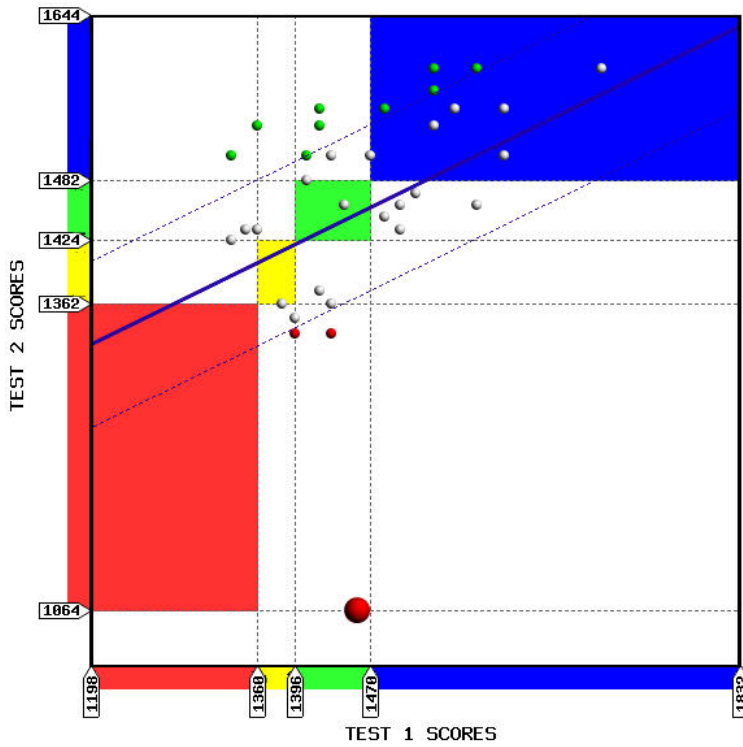




Discovery Education Assessment Sample Reports

Proficiency Level and Growth Reports

Comparison of Test 1 to Test 2



Name	Test 1	Test 2	Growth
ALLEN, JOHN	1192	1150	Below Avg.
DONAHUE, TIM	1280	1301	Below Avg.
HILLIARD, KATE	1464	1405	Below Avg.
ANDERSON, JAMES	1346	1354	Below Avg.
GARRISON, JACOB	1192	1354	Average
MCGRAW, ABBY	1307	1447	Average
JACKSON, LORI	1483	1546	Average
BELL, KAREN	1333	1479	Average
RICHARDSON, AMBER	1307	1479	Average
RODRIGUEZ, TINA	1280	1479	Average
BAKER, CHRIS	1232	1462	Average
RICH, SAMANTHA	1464	1581	Average
MATHIS, LARRY	1320	1546	Average
CARLISE, MICHAEL	1294	1546	Average
MILLER, STEVE	1320	1581	Above Avg.
GONZALEZ, ALEX	1294	1581	Above Avg.
JONES, SARA	1346	1637	Above Avg.
MASON, ISAAC	1232	1731	Above Avg.

[Get Excel](#)

Test 1 to Test 2 Change

