



Discovery Education Assessment Sample Reports

New York

Now you don't have to wait until the end of the year to know how your students will perform on the New York State Testing Program. **Discovery Education Assessment** provides reliable, state-specific, research-based assessments. In partnership with your school, Discovery Education Assessment focuses on helping students and teachers achieve their maximum potential and improve test results. In addition, the system is easy to use, affordable, and teacher friendly.

Using Discovery Education Assessment, your school will receive test results for individuals, classes, and grade levels from the beginning of the school year. Based on these results, teachers use resources and tools to customize individual and group learning plans.

Specifically, teachers receive the following information from each predictive test:

- Prediction of proficiency for reading, language arts, and math
- Student Subskill Report with mastery by New York core performance indicator
- Mastery levels for New York State and Terra Nova objectives and subskills
- Measurement of the *New York State Learning Standards*
- Item analysis detailing percent correct, item difficulty level, and content measured
- Growth score for monitoring AYP goals
- Individual student item answers with total items correct and percentage by domain

Discovery Education Assessment reports are the most state-specific results available. No other formative assessment offers New York State-specific predictive assessment. Reports are specifically based on New York's terms and definitions. Proficiency is identified as *Level 1*, *Level 2*, *Level 3*, and *Level 4*. Assessments measure progress throughout the year toward individual learning goals and state expectations. In addition, all information is provided at the following levels:

Student → Class → Grade → School → District

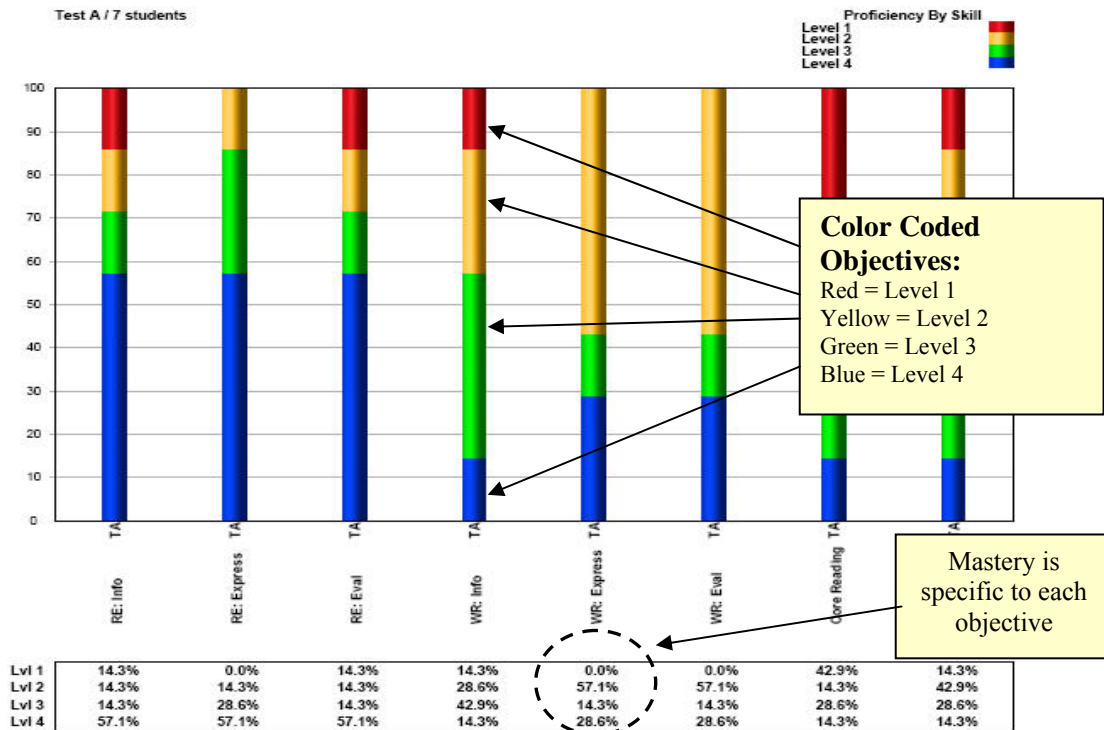
Reports are also available for the following subgroups: Gender, Ethnicity, LEP, Students with Disabilities, and Economically Disadvantaged. Additional subgroups can be created based on your specific needs.

Discovery Education Assessment helps you transform data into information, information into knowledge, and knowledge into action.



Discovery Education Assessment Sample Reports

Class and Grade Summary Report



Student Report

Test A of ABC (7 students)
Teacher: 1 NYDemoGradeThree
Class: Elaine 2 (virtual class)
Grade: Grade 3
Language Arts

Individual students within class

Student performance on each objective

Proficiency level by student

Subject Proficiency
Level 1 (0-6 correct)
Level 2 (7-14 correct)
Level 3 (15-24 correct)
Level 4 (25-32 correct)
determined by # correct

	RE: Info	RE: Express	RE: Eval	WR: Info	WR: Express	WR: Eval	Core Reading	Core Writing		
Garcia, S	Lvl 4	Lvl 3	Lvl 4	Lvl 3	Lvl 2	Lvl 2	Lvl 1	Lvl 2	Lvl 2	13
Harris, B	Lvl 1	Lvl 2	Lvl 2	Lvl 1	Lvl 2	Lvl 3	Lvl 2	Lvl 2	Lvl 2	7
Harris, B	Lvl 4	Lvl 4	Lvl 4	Lvl 4	Lvl 4	Lvl 4	Lvl 4	Lvl 4	Lvl 4	31
Jones, F	Lvl 2	Lvl 4	Lvl 1	Lvl 2	Lvl 2	Lvl 2	Lvl 1	Lvl 2	Lvl 2	8
Jones, S	Lvl 4	Lvl 4	Lvl 4	Lvl 2	Lvl 4	Lvl 2	Lvl 3	Lvl 3	Lvl 3	19
Martin, A	Lvl 3	Lvl 4	Lvl 4	Lvl 3	Lvl 2	Lvl 2	Lvl 1	Lvl 1	Lvl 2	12
Martinez, A	Lvl 4	Lvl 3	Lvl 3	Lvl 3	Lvl 3	Lvl 4	Lvl 3	Lvl 3	Lvl 3	19



Discovery Education Assessment Sample Reports

Objective Report

Test A of ABC (7 students)
Teacher: 1 NYDemoGradeThree
Class: Elaine 2 (virtual class)
Grade: Grade 3
Subject: Reading/Language Arts

State Curriculum Code, Standard, Subskill

Item difficulty level

Q.#	Ans	Right #	Wrong #	Code	Reporting Category	Reporting Subcategory	Level
NY State Reporting Categories							
Reading/Language Arts							
3	A	43	4	R-1.3	Reading: Information and Understanding	R-1.3 Written Directions	Mod.
2	A	29	8	R-1.4	Reading: Information and Understanding	R-1.4 Locate Information	Easy
3	A	43	4	W-2.1b	Writing: Literary Response and Expression	W-2.1b Use Rhythm and Rhyme	Mod.
3	A	43	4	W-3.6	Writing: Critical Analysis and Evaluation	W-3.6 Analyze Literary Elements	Hard
2	A	29	8	R-2.11	Reading: Literary Response and Expression	R-2.11 Support Ideas	Mod.
6	A	3	43	R-2.8	Reading: Literary Response and Expression	R-2.8 Make Predictions	Mod.
7	D	3	43	R-3.1b	Reading: Critical Analysis and Evaluation	R-3.1b Evaluate Details	Hard
8	C	3	43	W-2.3	Writing: Literary Response and Expression	W-2.3 Support Understanding	Hard

Color coding indicates overall class mastery by item

Answers Report

Test A of ABC (7 students)
Teacher: 1 NYDemoGradeThree
Class: Elaine 2 (virtual class)
Grade: Grade 3
Subject: Reading/Language Arts

Answer key

Actual student response

Subject Proficiency
Level 1 (0-6 correct)
Level 2 (7-14 correct)
Level 3 (15-24 correct)
Level 4 (25-32 correct)
determined by # correct

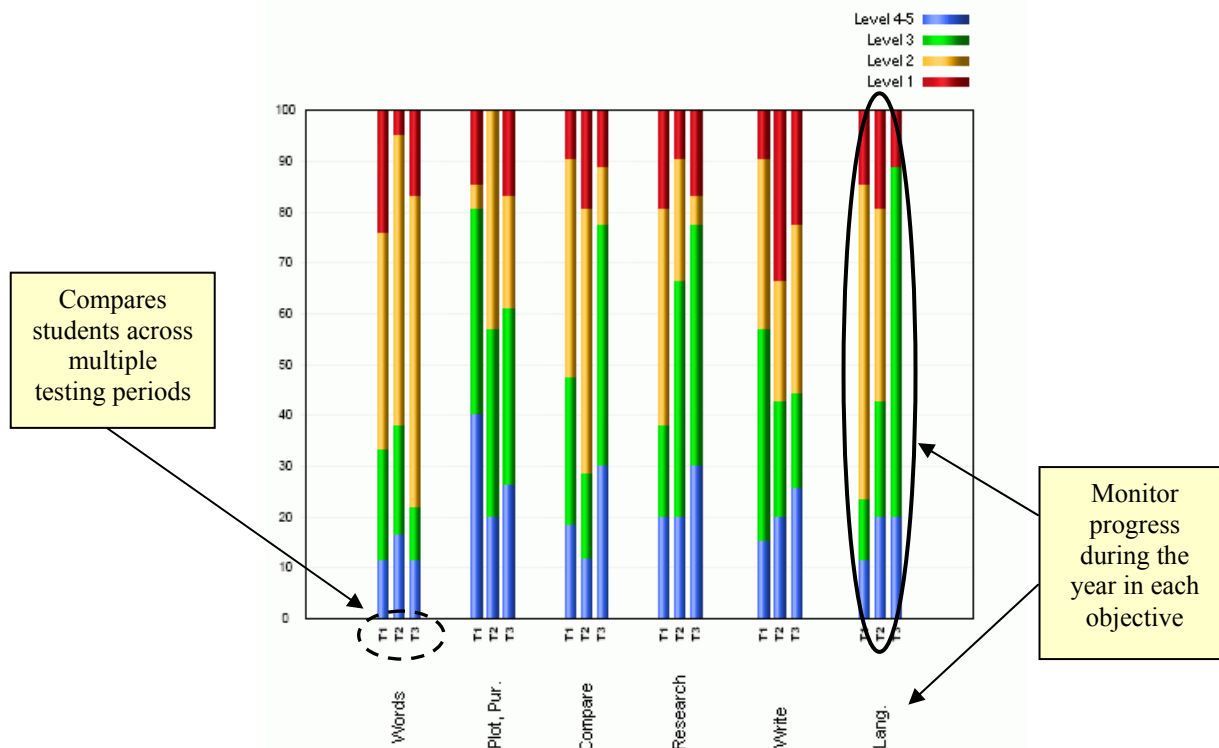
	1	2	3	4	5	6	7	8	9	10	11	12	13	14	15	16	17	18	19	20	21	22	23	24	25	26	27	28	29	30	31	32	Num. correct	% correct	Gr. + % correct	Profic. Level	
Answer Key	A	B	D	A	C	A	D	C	B	C	A	D	B	A	D	B	C	D	B	B	C	D	B	A	C	C	D	C	B	D	C	A					
Garcia, S	C	B	D	C	C	A	B	A	A	C	A	B	B	C	D	C	C	B	B	C	A	D	C	A	A	D	B	A	D	D	B	B	13	41%	341	Lvl 2	
Harris, B	B	A	C	A	B	B	C	D	A	A	B	A	C	B	B	B	C	C	A	B	C	C	D	C	B	C	C	A	D	D	B	B	7	22%	322	Lvl 2	
Harris, B	A	B	D	A	C	A	D	C	B	C	A	D	B	A	D	B	C	D	B	B	C	B	B	A	C	C	D	C	B	D	C	A	31	97%	397	Lvl 4	
Jones, F	A	A	A	B	B	A	B	D	B	B	B	A	A	B	B	B	B	A	C	C	A	B	C	D	C	B	D	A	B	D	B	B	8	25%	325	Lvl 2	
Jones, S	A	B	D	C	C	B	D	C	B	D	A	D	A	B	D	B	C	B	A	B	C	B	C	A	C	C	B	B	C	B	C	B	19	59%	359	Lvl 3	
Martin, A	B	B	B	A	C	D	B	A	B	C	A	B	B	D	D	B	C	B	C	A	A	B	A	A	C	A	B	A	C	B	A	C	B	12	38%	338	Lvl 2
Martinez, A	A	B	D	A	C	B	D	C	C	D	D	A	A	D	B	C	B	D	B	A	B	B	A	A	C	D	C	A	B	C	A	B	C	19	59%	359	Lvl 3

Growth Score indicates estimated percentage of skills mastered at grade level for each student



Discovery Education Assessment Sample Reports

Comparison Report



Individual Student Report

Student: Oberman, Alyssa
Teacher: Jason Kemp
Class: Kemp read/math
Grade: 3
Subject: Reading/Lang Arts

Compare across multiple test periods

Level 4-5 (Blue)
Level 3 (Green)
Level 2 (Yellow)
Level 1 (Red)

Great for Parent Conferences, Tutors, IEPs and Student Files

Skills	Test 1	Test 2	Test 3	Description of Skills
Words	Lv 3	Lv 3	Lv 2	Using context clues, prefixes, suffixes, root words, and word relationships, the student identifies the meaning of a word or phrase in a passage and/or graphic. Simple analysis and/or direct inference may be required to comprehend the meaning of the word or phrase.
Plot, Pur.	Lv 3	Lv 3	Lv 4-5	The student identifies the following from a passage: main idea or essential message, relevant supporting details and facts, and/or chronological order or other sequence of events.
Compare	Lv 3	Lv 3	Lv 4-5	The student recognizes the use of comparison and contrast in a text.
Research	Lv 3	Lv 1	Lv 3	The student identifies meanings through the process of selecting and/or organizing information from a single text that contains multiple representations of information. The complexity of the presentation will be appropriate to third grade. This process may involve application, analysis, synthesis, and/or evaluation appropriate to third grade.
Write	Lv 3	Lv 3	Lv 4-5	The student uses the writing processes effectively to communicate.
Lang.	Lv 3	Lv 1	Lv 2	Use appropriate conventions of language to communicate effectively in writing

Description of objectives

Report shows student proficiency for each assessment across all objectives

Reading/Lang Arts			
	Test 1	Test 2	Test 3
Number Correct	21	15	21
Percent Correct	84	60	84
Proficiency Score	284	360	384

Proficiency Levels
Level 1 (Red)
Level 2 (Yellow)
Level 3 (Green)
Level 4-5 (Blue)
determined by # correct

Proficiency and Growth Score Data





Discovery Education Assessment Sample Reports

District Reports School Comparison

Comparison Table: Summary of Students by Subject

	Level 4.5		Level 3		Level 2		Level 1		Percent Lv 3+	Totals		
	#	%	#	%	#	%	#	%		#	%	
Test 1 Results												
All Schools	7	28.0	9	36.0	2	8.0	7	28.0	64.0	25	100	
Demo	7	29.2	9	37.5	2	8.3	6	25.0	66.7	24	100	

Comparison Table: Summary of Students by Skill

	Total Students	Level 4.5		Level 3		Level 2		Level 1		Total #	Total %	
		#	%	#	%	#	%	#	%			
Test 1 Results												
Words	All Schools	25	11	44.0	7	28.0	6	24.0	1	4.0	25	100
5 items	Demo	24	11	45.8	7	29.2	6	25.0	0	0.0	24	100
Plot, Pur.	All Schools	25	12	48.0	5	20.0	3	12.0	5	20.0	25	100
8 items	Demo	24	12	50.0	5	20.8	2	8.3	5	20.8	24	100
Compare	All Schools	25	12	48.0	6	24.0	6	24.0	1	4.0	25	100
8 items	Demo	24	12	50.0	6	25.0	5	20.8	1	4.2	24	100
Research	All Schools	25	9	36.0	7	28.0	4	16.0	5	20.0	25	100
4 items	Demo	24	9	37.5	7	29.2	3	12.5	5	20.8	24	100
Write	All Schools	25	10	40.0	4	16.0	7	28.0	4	16.0	25	100

Drill Down Reports

		Level 4.5		Level 3		Level 2		Level 1		
		#	%	#	%	#	%	#	%	
Test 1 Results										
Grade 3	Words	11	45.83	7	29.17	6	25.00	0	0.00	
	Plot, Pur.	12	50.00	5	20.83	2	8.33	5	20.83	
	Compare	12	50.00	6	25.00	5	20.83	1	4.17	
	Research	9	37.50	7	29.17	3	12.50	5	20.83	
	Write	10	41.67	4	16.67	7	29.17	3	12.50	
	Lang.	7	29.17	9	37.50	5	20.83	3	12.50	
Grade 6	Words	11	55.00	3	15.00	2	10.00	4	20.00	
	Plot, Pur.	13	65.00	3	15.00	1	5.00	3	15.00	
	Compare	12	60.00	3	15.00	4	20.00	1	5.00	
	Research	9	45.00	7	35.00	2	10.00	2	10.00	
	Write	10	50.00	2	10.00	6	30.00	2	10.00	
	Lang.	7	35.00	7	35.00	5	25.00	1	5.00	



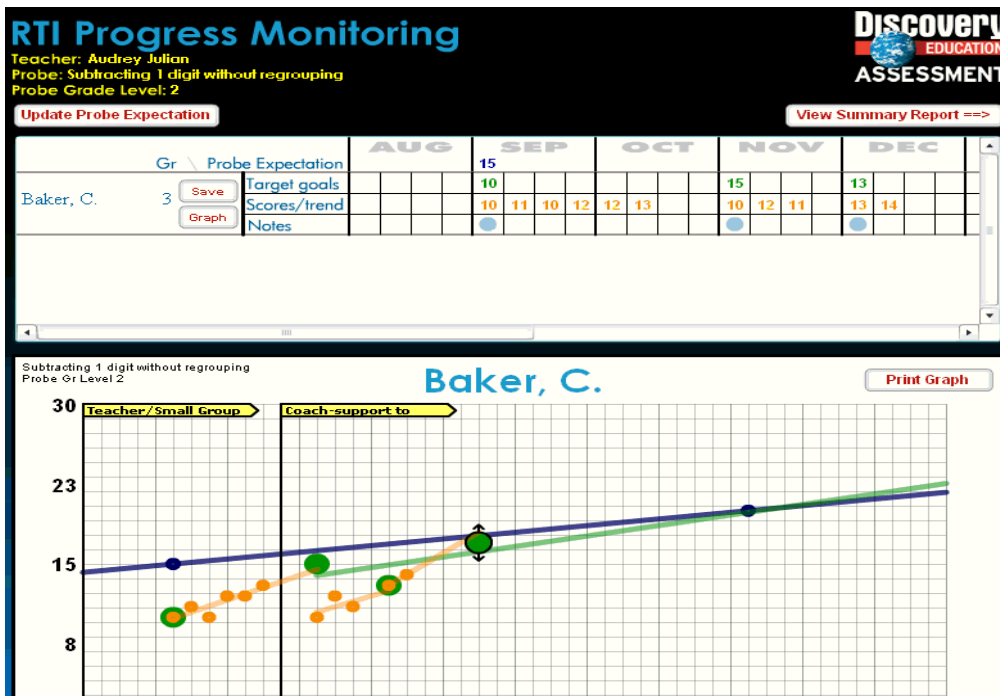
Discovery Education Assessment Sample Reports

Disaggregated Reports

Number of Students by Sub-Group	
Subgroup	Number
No Value	6
Male	19
Female	19

	Level 4/3	Level 3	Level 2	Level 1
Grade 3 Test 1 Results				
Words & Phrases in Context				
Group Totals	11	7	6	0
No Value	3	1	2	0
Male	5	3	2	0
Female	3	3	2	0
Main Idea, Plot, & Purpose				
Group Totals	12	5	2	5
No Value	1	1	1	3
Male	7	2	0	1
Female	4	2	1	1
Comparisons & Cause/Effect				
Group Totals	12	6	5	1
No Value	2	1	3	0
Male	6	3	1	0
Female	4	2	1	1

Response To Intervention

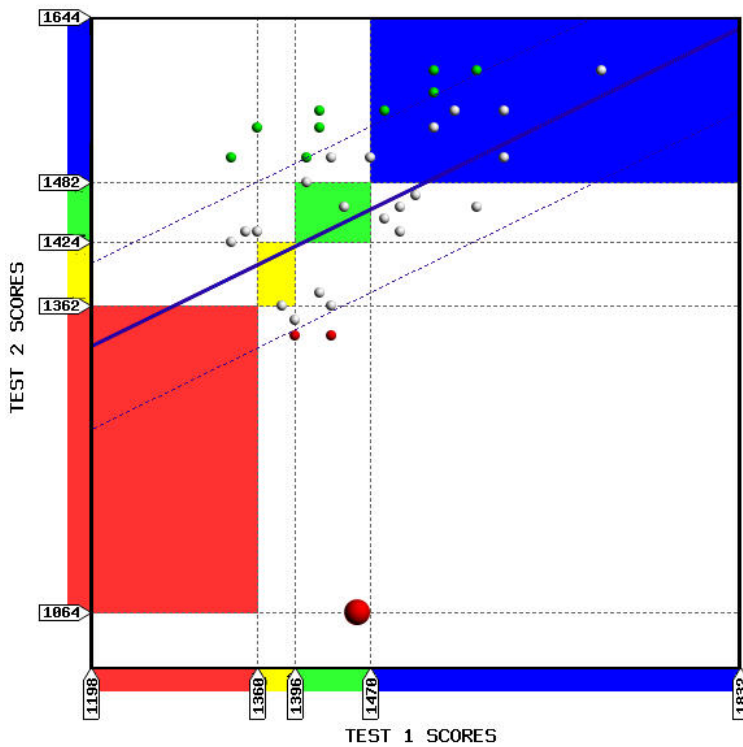




Discovery Education Assessment Sample Reports

Proficiency Level and Growth Reports

Comparison of Test 1 to Test 2



Name	Test 1	Test 2	Growth
ALLEN, JOHN	1192	1150	Below Avg.
DONAHUE, TIM	1280	1301	Below Avg.
HILLIARD, KATE	1464	1405	Below Avg.
ANDERSON, JAMES	1346	1354	Below Avg.
GARRISON, JACOB	1192	1354	Average
MCGRAW, ABBY	1307	1447	Average
JACKSON, LORI	1483	1546	Average
BELL, KAREN	1333	1479	Average
RICHARDSON, AMBER	1307	1479	Average
RODRIGUEZ, TINA	1280	1479	Average
BAKER, CHRIS	1232	1462	Average
RICH, SAMANTHA	1464	1581	Average
MATHIS, LARRY	1320	1546	Average
CARLISE, MICHAEL	1294	1546	Average
MILLER, STEVE	1320	1581	Above Avg.
GONZALEZ, ALEX	1294	1581	Above Avg.
JONES, SARA	1346	1637	Above Avg.
MASON, ISAAC	1232	1731	Above Avg.

[Get Excel](#)

Test 1 to Test 2 Change

