



# Discovery Education Assessment Sample Reports

## Ohio

Now you don't have to wait until the end of the year to know how your students will perform on the Ohio Achievement Test. **Discovery Education Assessment** provides reliable, state-specific, research-based assessments. In partnership with your school, Discovery Education Assessment focuses on helping students and teachers achieve their maximum potential and improve test results. In addition, the product is easy to use, affordable, and teacher friendly.

Using Discovery Education Assessment, your school will receive test results for individuals, classes, and grade levels from the beginning of the school year. Based on these results, teachers use resources and tools to customize individual and group learning plans.

Specifically, teachers receive the following information from each predictive test:

- Prediction of proficiency for reading, language arts, and math
- Mastery levels for Ohio Achievement Test objectives
- Measurement of the *Ohio's Academic Content Standards*
- Item analysis detailing percent correct, item difficulty level, and content measured
- Growth score for monitoring AYP goals
- Individual student item answers with total items correct and percentage by domain

Discovery Education Assessment reports are the most state-specific results available. No other formative assessment offers Ohio-specific predictive assessment. Reports are specifically based on Ohio's terms and definitions. Proficiency is identified as *Limited/Basic*, *Proficient*, and *Accelerated/Advanced*. Assessments measure progress throughout the year toward individual learning goals and state expectations. In addition, all information is provided at the following levels:

Student → Class → Grade → School → District

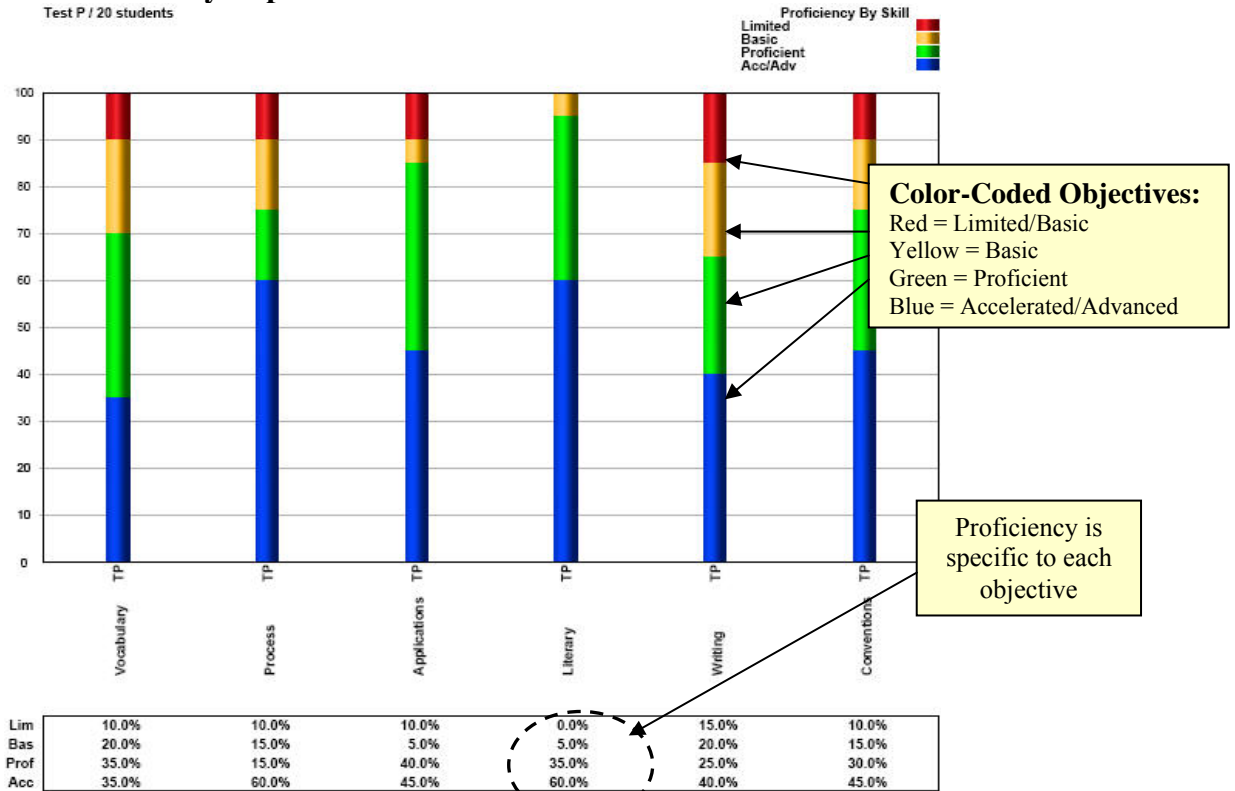
Reports are also available for the following subgroups: Gender, Ethnicity, LEP, Students with Disabilities, and Economically Disadvantaged. Additional subgroups can be created based on your specific needs.

Discovery Education Assessment helps you transform data into information, information into knowledge, and knowledge into action.



# Discovery Education Assessment Sample Reports

## Class and Grade Summary Report



## Student Report

Test P of PAB (20 students)  
 Teacher: 1 OHDemoGradeSix  
 Class: Grade 6 Reading  
 Grade: Grade 6  
 Subject: Reading/Language Arts

Individual students within class

Student performance on each objective

Proficiency level by student

Subject Proficiency  
 Limited (0-9 correct)  
 Basic (10-12 correct)  
 Proficient (13-20 correct)  
 Acc/Adv (21-32 correct)  
 determined by # correct

	Vocabulary	Process	Applications	Literary	Writing	Conventions	
Adams, J	Prof	Acc	Prof	Prof	Lim	Prof	Prof 14
Allen, R	Acc	Acc	Acc	Acc	Acc	Acc	Acc 24
Carter, F	Acc	Acc	Acc	Acc	Acc	Acc	Acc 27
Clark, A	Acc	Lim	Prof	Prof	Prof	Bas	Bas 17
Gonzalez, M	Bas	Prof	Prof	Acc	Lim	Lim	Bas 11
Green, C	Bas	Acc	Acc	Acc	Prof	Acc	Acc 22
Hall, E	Lim	Lim	Lim	Prof	Bas	Lim	Lim 4
Hernandez, E	Acc	Acc	Acc	Acc	Acc	Acc	Acc 29
Hill, M	Acc	Acc	Acc	Acc	Acc	Acc	Acc 30
Jackson, E	Bas	Acc	Prof	Prof	Prof	Acc	Prof 16
King, G	Prof	Bas	Lim	Prof	Bas	Bas	Lim 8
Lee, T	Prof	Bas	Prof	Bas	Bas	Bas	Lim 9
Lewis, J	Acc	Acc	Acc	Acc	Acc	Acc	Acc 30



# Discovery Education Assessment Sample Reports

## Objective Report

Test P of PAB (20 students)  
Teacher: 1 OHDemoGradeSix  
Class: Grade 6 Reading  
Grade: Grade 6  
Subject: Reading/Language Arts

State Curriculum Code, Standard, Subskill

Item difficulty level

Q.#	Ans	Right #	Wrong #	Code	Reporting Category	Reporting Subcategory	Level
Ohio Reporting Categories							
Reading/Language Arts							
1	C	13	7	5	Reading Applications: Literary Text	5 Theme	Mod.
2	A	11	9	3	Reading Applications: Literary Text	3 Plot	Hard
3	B	14	6	9	Reading Process: Concepts of Print, Comprehension	9 Independent Reading	Easy
4	D	14	6	3	Reading Applications: Literary Text	3 Plot	Easy
5	B	10	10	1	Acquisition of Vocabulary	1 Context Clues	Mod.
6	B	12	8	10	Reading Process: Concepts of Print, Comprehension	10 Various Purposes	Mod.
7	C	12	8	4	Reading Applications: Informational, Technical and Pers	4 Compare Summary to Text	Mod.
8	A	12	8	7	Reading Process: Concepts of Print, Comprehension	7 Monitor Comprehension	Hard

Color coding indicates overall class mastery by item

## Answers Report

Test P of PAB (20 students)  
Teacher: 1 OHDemoGradeSix  
Class: Grade 6 Reading  
Grade: Grade 6  
Subject: Reading/Language Arts

Answer key

Actual student response

Subject Proficiency  
Limited (0-9 correct) [Red]  
Basic (10-12 correct) [Yellow]  
Proficient (13-20 correct) [Green]  
Acc/Adv (21-32 correct) [Blue]  
determined by # correct

	1	2	3	4	5	6	7	8	9	10	11	12	13	14	15	16	17	18	19	20	21	22	23	24	25	26	27	28	29	30	31	32	Num. correct	% correct	Gr. + % Correct	Profic. Level
Adams, J	B	A	B	C	B	B	A	D	B	B	B	A	A	B	B	A	A	B	B	A	B	B	B	D	B	A	D	C	C	D	B	14	44%	54	Prof	
Allen, R	B	A	B	B	B	B	C	B	C	B	D	A	C	C	A	D	C	C	A	C	B	A	D	B	A	C	C	A	D	A	A	B	24	75%	575	Acc
Carter, F	A	A	B	D	B	B	C	A	C	B	B	A	B	A	A	D	A	C	A	C	D	A	D	B	A	D	C	A	D	C	B	B	27	84%	584	Acc
Clark, A	C	D	C	D	C	A	A	D	C	B	C	D	C	C	D	B	B	A	C	B	A	B	A	B	A	B	A	A	C			11	34%	534	Bas	
Gonzalez, M	C	D	B	B	D	A	C	A	A	B	D	D	C	B	D	B	B	C	A	B	D	D	D	C	D	C	A	D	B	A		11	34%	534	Bas	
Green, C	C	A	B	D	C	B	C	A	C	B	C	D	B	A	A	C	B	C	A	A	D	A	D	C	A	B	C	D	C			22	69%	569	Acc	
Hall, E	B	D	C	D	A	A	B	D	B	C	C	D	D	B	D	C	A	B	A	C	B	D	C	D	A	B	A	D	B	B		4	13%	513	Lim	
Hernandez, E	C	B	B	D	B	B	C	A	C	B	D	A	B	C	A	D	B	C	A	C	B	A	D	B	A	B	C	A	D	C		29	91%	591	Acc	
Hill, M	C	A	B	D	B	B	C	A	C	B	D	A	B	A	A	D	B	C	A	C	D	A	D	B	A	D	C	A	D	A		30	94%	594	Acc	
Jackson, E	C	B	B	D	A	B	C	D	C	D	D	A	C	C	A	B	B	B	D	A	C	D	B	C	B	D	B	A	D	B		16	50%	550	Prof	
King, G	B	A	A	D	D	D	B	A	B	C	C	B	C	C	D	B	D	A	D	C	B	D	B	B	B	B	C	B	B	B		8	25%	525	Lim	

Growth Score indicates estimated percentage of skills mastered at grade level for each student



# Discovery Education Assessment Sample Reports

## Student Subskill Report

Reporting Categories	Vocabulary				Process				Applications												Writing				Conventions				Proficiency							
	5	14	18	24	3	6	8	15	7	9	10	11	12	13	16	22	1	2	4	17	19	20	21	23	25	26	27	28	29	30	31	32	Proficient	Proficiency Percent Correct	Total Number Correct	Growth Scale
Question Number																																				
State Code																																				
Item Difficulty	M	M	H	E	E	M	H	M	M	E	H	M	H	M	M	M	M	H	E	M	H	E	M	M	M	M	E	H	E	M	M	H	Proficient	Proficiency Percent Correct	Total Number Correct	Growth Scale
Correct Answer	B	C	C	B	B	B	A	A	C	C	B	D	A	B	D	A	C	A	D	B	A	C	D	D	A	D	C	A	D	C	A	B				
Adams, J		A	A				D		A	B		B	B			B	C				B	B	B	D	B	A	D	C		D	14	44%	14	0		
Ben, R							B					C				B	B	C			B			C				A			24	75%	24	0		
Burter, F		A									B					A		A										B			27	84%	27	0		
Clark, A	C				C	A	D	D	A		C	D	C			D	C	D	B	B	C			B	A			B	A	C	11	34%	11	0		
Gonzalez, M	D	B	C		A		D		A		D	C	B	D		D	B		B				D	C	A	D	B	A	D	C	11	34%	11	0		
Green, C	C	A	C								C	D	C							A			B	D	C					22	69%	22	0			
Hall, E	A	B	B	D	C	A	D	D	B	B	C	D	D	C	D	B	D	A			B	C	B	A	D	B	B	D	C	4	13%	4	0			
Hernandez, E																B					B		B							29	91%	29	0			
Hill, M		A																									A			30	94%	30	0			
Jackson, E	A	B	C				D			D		C	B	D		B			D	A	C	B	B	B			B			16	50%	16	0			
King, G	D	A			A	D	D	B	B	C	C	B	C	B	D	B			D	D	B	B	B	B	B		B	B	C	8	25%	8	0			
Lee, T		A	B		A	C	D		B	D	C	D	B			B	B	C	D	A	B	C	D	A	B		C	D	A	9	28%	9	0			
Lewis, J																D											B			30	94%	30	0			
Lopez, J	D		A				D		B		B	C				B		B			C						B		D	21	66%	21	0			

OH-specific standards

Literary

State proficiency prediction by student

Individual student performance

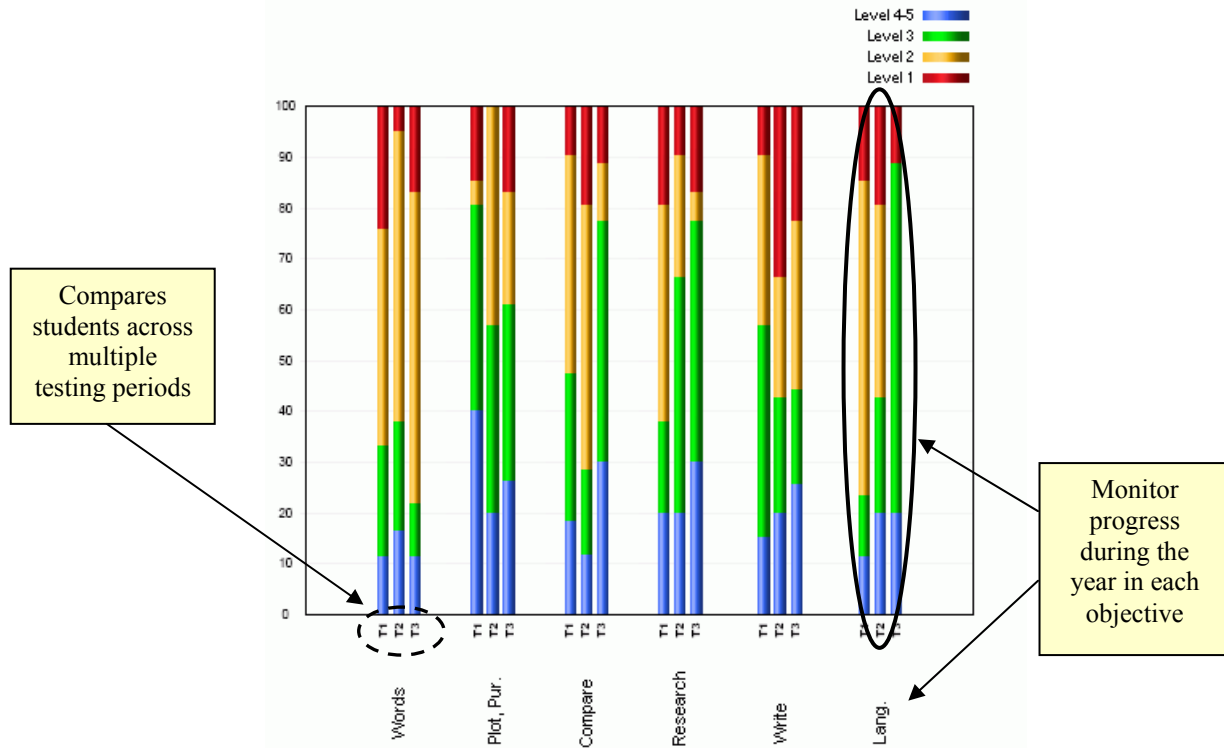
Hall, E

4 13% 4 0



# Discovery Education Assessment Sample Reports

## Comparison Report



## Individual Student Report

Student: Oberman, Alyssa  
Teacher: Jason Kemp  
Class: Kemp read/math  
Grade: 3  
Subject: Reading/Lang Arts

Compare across multiple test periods

Level 4-5 (Blue)  
Level 3 (Green)  
Level 2 (Yellow)  
Level 1 (Red)

Great for Parent Conferences, Tutors, IEPs and Student Files

Skills	Test 1	Test 2	Test 3	Description of Skills
Words	Lv 3	Lv 3	Lv 2	Using context clues, prefixes, suffixes, root words, and word relationships, the student identifies the meaning of a word or phrase in a passage and/or graphic. Simple analysis and/or direct inference may be required to comprehend the meaning of the word or phrase.
Plot, Pur.	Lv 3	Lv 3	Lv 4-5	The student identifies the following from a passage: main idea or essential message, relevant supporting details and facts, and/or chronological order or other sequence of events.
Compare	Lv 3	Lv 3	Lv 4-5	The student recognizes the use of comparison and contrast in a text.
Research	Lv 3	Lv 1	Lv 3	The student identifies meanings through the process of selecting and/or organizing information from a single text that contains multiple representations of information. The complexity of the presentation will be appropriate to third grade. This process may involve application, analysis, synthesis, and/or evaluation appropriate to third grade.
Write	Lv 3	Lv 3	Lv 4-5	The student uses the writing processes effectively to communicate.
Lang.	Lv 3	Lv 1	Lv 2	Use appropriate conventions of language to communicate effectively in writing

Description of objectives

Report shows student proficiency for each assessment across all objectives

Reading/Lang Arts			
	Test 1	Test 2	Test 3
Number Correct	21	15	21
Percent Correct	84	60	84
Proficiency Score	284	360	384

Proficiency Levels  
Level 1 (Red)  
Level 2 (Yellow)  
Level 3 (Green)  
Level 4-5 (Blue)  
determined by # correct

Proficiency and Growth Score Data





# Discovery Education Assessment Sample Reports

## District Reports School Comparison

Comparison Table: Summary of Students by Subject

	Level 4.5		Level 3		Level 2		Level 1		Percent Lv 3+	Totals		
	#	%	#	%	#	%	#	%		#	%	
Test 1 Results												
All Schools	7	28.0	9	36.0	2	8.0	7	28.0	64.0	25	100	
Demo	7	29.2	9	37.5	2	8.3	6	25.0	66.7	24	100	

Comparison Table: Summary of Students by Skill

	Total Students	Level 4.5		Level 3		Level 2		Level 1		Total #	Total %	
		#	%	#	%	#	%	#	%			
Test 1 Results												
Words	All Schools	25	11	44.0	7	28.0	6	24.0	1	4.0	25	100
5 items	Demo	24	11	45.8	7	29.2	6	25.0	0	0.0	24	100
Plot, Pur.	All Schools	25	12	48.0	5	20.0	3	12.0	5	20.0	25	100
8 items	Demo	24	12	50.0	5	20.8	2	8.3	5	20.8	24	100
Compare	All Schools	25	12	48.0	6	24.0	6	24.0	1	4.0	25	100
8 items	Demo	24	12	50.0	6	25.0	5	20.8	1	4.2	24	100
Research	All Schools	25	9	36.0	7	28.0	4	16.0	5	20.0	25	100
4 items	Demo	24	9	37.5	7	29.2	3	12.5	5	20.8	24	100
Write	All Schools	25	10	40.0	4	16.0	7	28.0	4	16.0	25	100

## Drill Down Reports

		Level 4.5		Level 3		Level 2		Level 1		
		#	%	#	%	#	%	#	%	
Test 1 Results										
Grade 3	Words	11	45.83	7	29.17	6	25.00	0	0.00	
	Plot, Pur.	12	50.00	5	20.83	2	8.33	5	20.83	
	Compare	12	50.00	6	25.00	5	20.83	1	4.17	
	Research	9	37.50	7	29.17	3	12.50	5	20.83	
	Write	10	41.67	4	16.67	7	29.17	3	12.50	
	Lang.	7	29.17	9	37.50	5	20.83	3	12.50	
Grade 6	Words	11	55.00	3	15.00	2	10.00	4	20.00	
	Plot, Pur.	13	65.00	3	15.00	1	5.00	3	15.00	
	Compare	12	60.00	3	15.00	4	20.00	1	5.00	
	Research	9	45.00	7	35.00	2	10.00	2	10.00	
	Write	10	50.00	2	10.00	6	30.00	2	10.00	
	Lang.	7	35.00	7	35.00	5	25.00	1	5.00	



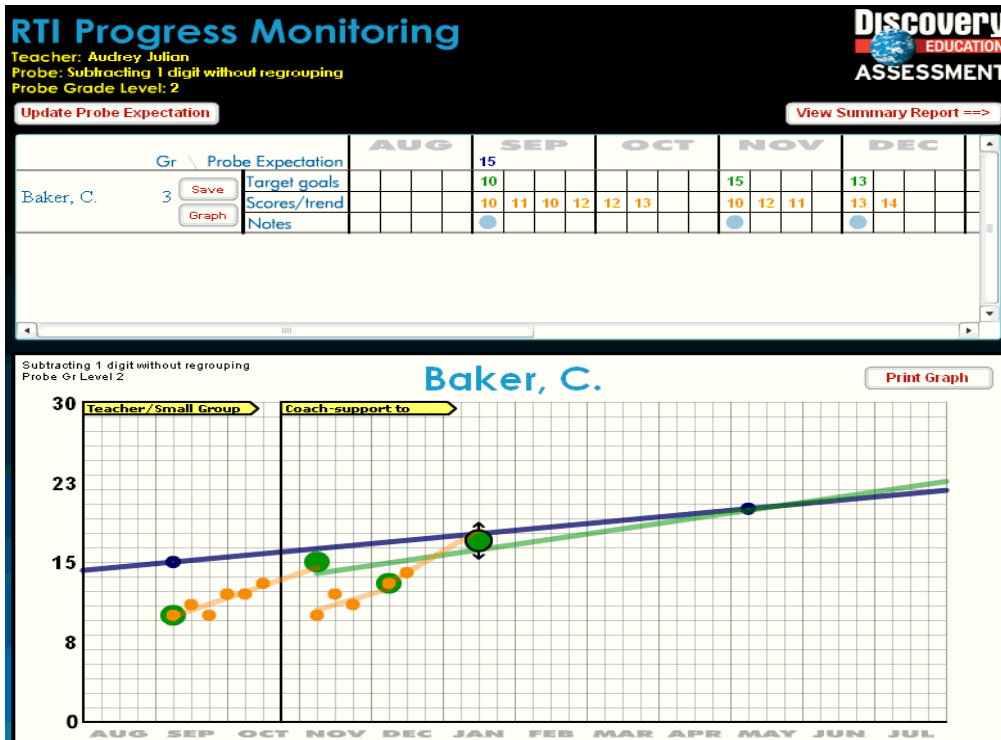
# Discovery Education Assessment Sample Reports

## Disaggregated Reports

Number of Students by Sub-Group	
Subgroup	Number
No Value	6
Male	19
Female	19

	Level 4/3	Level 3	Level 2	Level 1
<b>Grade 3 Test 1 Results</b>				
<b>Words &amp; Phrases in Context</b>				
Group Totals	11	7	6	0
No Value	3	1	2	0
Male	5	3	2	0
Female	3	3	2	0
<b>Main Idea, Plot, &amp; Purpose</b>				
Group Totals	12	5	2	5
No Value	1	1	1	3
Male	7	2	0	1
Female	4	2	1	1
<b>Comparisons &amp; Cause/Effect</b>				
Group Totals	12	6	5	1
No Value	2	1	3	0
Male	6	3	1	0
Female	4	2	1	1

## Response To Intervention

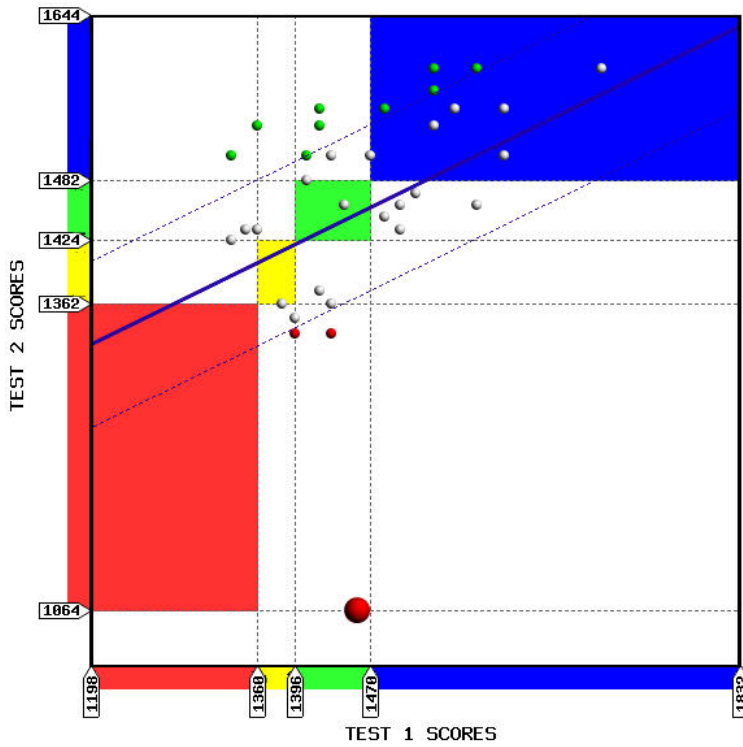




# Discovery Education Assessment Sample Reports

## Proficiency Level and Growth Reports

Comparison of Test 1 to Test 2



Name	Test 1	Test 2	Growth
ALLEN, JOHN	1192	1150	Below Avg.
DONAHUE, TIM	1280	1301	Below Avg.
HILLIARD, KATE	1464	1405	Below Avg.
ANDERSON, JAMES	1346	1354	Below Avg.
GARRISON, JACOB	1192	1354	Average
MCGRAW, ABBY	1307	1447	Average
JACKSON, LORI	1483	1546	Average
BELL, KAREN	1333	1479	Average
RICHARDSON, AMBER	1307	1479	Average
RODRIGUEZ, TINA	1280	1479	Average
BAKER, CHRIS	1232	1462	Average
RICH, SAMANTHA	1464	1581	Average
MATHIS, LARRY	1320	1546	Average
CARLISE, MICHAEL	1294	1546	Average
MILLER, STEVE	1320	1581	Above Avg.
GONZALEZ, ALEX	1294	1581	Above Avg.
JONES, SARA	1346	1637	Above Avg.
MASON, ISAAC	1232	1731	Above Avg.

[Get Excel](#)

Test 1 to Test 2 Change

