



Discovery Education Assessment Sample Reports

Wisconsin

Now you don't have to wait until the end of the year to know how your students will perform on the WKCE. **Discovery Education Assessment** provides reliable, state-specific, research-based assessments. In partnership with your school, Discovery Education Assessment focuses on helping students and teachers achieve their maximum potential and improve test results. In addition, the product is easy to use, affordable, and teacher friendly.

Using Discovery Education Assessment, your school will receive test results for individuals, classes, and grade levels from the beginning of the school year. Based on these results, teachers use resources and tools to customize individual and group learning plans.

Specifically, teachers receive the following information from each predictive test:

- Prediction of proficiency for reading, language arts, and math
- Mastery levels for WKCE objectives
- Measurement of the *WKCE Assessment Frameworks*
- Item analysis detailing percent correct, item difficulty level, and content measured
- Growth score for monitoring AYP goals
- Individual student item answers, with total items correct and percentage by domain

Discovery Education Assessment reports are the most state-specific results available. No other formative assessment offers Wisconsin-specific predictive assessment. Reports are specifically based on Wisconsin's terms and definitions. Proficiency is identified as *Minimal*, *Basic*, *Proficient*, and *Advanced*. Assessments measure progress throughout the year toward individual learning goals and state expectations. In addition, all information is provided at the following levels:

Student → Class → Grade → School → District

Reports are also available for the following subgroups: Gender, Ethnicity, LEP, Students with Disabilities, and Economically Disadvantaged. Additional subgroups can be created based on your specific needs.

Discovery Education Assessment helps you transform data into information, information into knowledge, and knowledge into action.

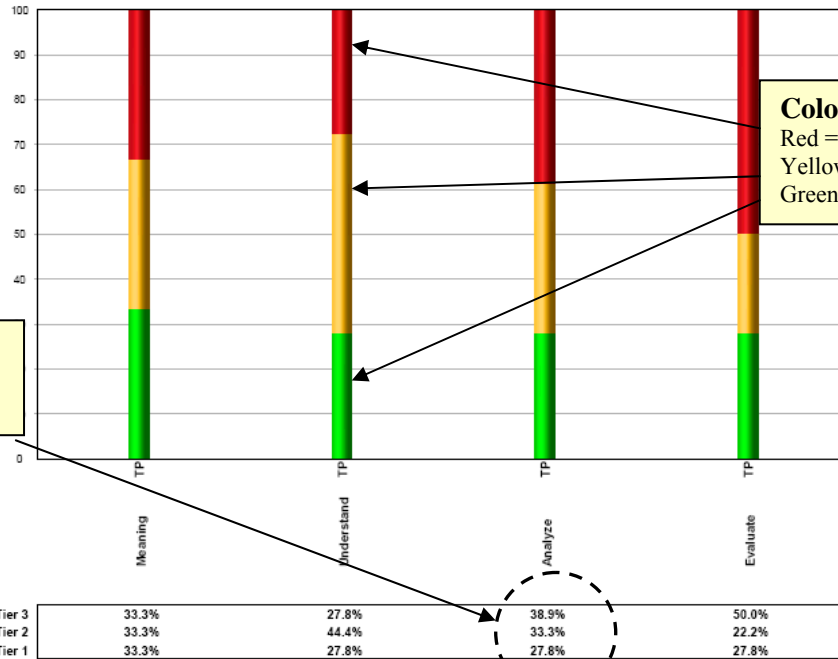


Discovery Education Assessment Sample Reports

Class and Grade Summary Report

Test P / 18 students

Mastery By Skill
Tier 3 - Intensive Interv.
Tier 2 - Supp. Instruct.
Tier 1 - Acceptable Perf.



Color Coded Objectives:
Red = Intensive Interval
Yellow = Supplemental Instruction
Green = Acceptable Performance

Proficiency is specific to each objective

Student Report

Test P of PABC (18 students)
Teacher: 1 WIDemoGradeThree
Class: Grade 3 Reading
Grade: Grade 3
Subject: Reading/Language Arts

Student performance on each objective

Proficiency level by student

Individual students within class

Subject Proficiency
Minimal (0-7 correct)
Basic (8-15 correct)
Proficient (16-25 correct)
Advanced (26-32 correct)
determined by # correct

	Meaning	Understand	Analyze	Evaluate	Proficiency	Count
Anderson, J	Tier 1	Tier 1	Tier 1	Tier 1	Adv	28
Baker, R	Tier 3	Tier 3	Tier 3	Tier 3	Bas	8
Brown, S	Tier 1	Tier 1	Tier 1	Tier 1	Adv	30
Davis, G	Tier 3	Tier 3	Tier 3	Tier 3	Bas	8
Garcia, S	Tier 3	Tier 2	Tier 2	Tier 3	Bas	13
Harris, B	Tier 1	Tier 1	Tier 1	Tier 1	Adv	31
Jones, S	Tier 1	Tier 2	Tier 2	Tier 2	Prof	19
Martin, A	Tier 3	Tier 2	Tier 2	Tier 3	Bas	12
Martinez, A	Tier 2	Tier 2	Tier 2	Tier 2	Prof	19
Miller, K	Tier 2	Tier 3	Tier 3	Tier 1	Prof	16
Moore, S	Tier 2	Tier 1	Tier 1	Tier 1	Prof	24
Nelson, J	Tier 1	Tier 2	Tier 2	Tier 3	Prof	19





Discovery Education Assessment Sample Reports

Objective Report

Q.#	Ans	Right #	Wrong #	Code	Reporting C	Category	Level
		%	%				
State Curriculum Code, Standard, Subskill							
1	C	12/67	6/33	1.1	Determine the meaning of words and phrases in context	1.1 Context Clues	Mod.
2	A	10/56	8/44	3.2	Analyze text	3.2 Analyze Informational Text	Easy
3	C	12/67	6/33	2.1	Understand text	2.1 Meaning in Literary Text	Easy
4	B	12/67	6/33	3.2	Analyze text	3.2 Analyze Informational Text	Mod.
5	D	9/50	9/50	2.1	Understand text	2.1 Meaning in Literary Text	Easy
6	A	10/56	8/44	3.3	Analyze text	3.3 Analyze Author Use of Language	Easy
7	C	10/56	8/44	3.3	Analyze text	3.3 Analyze Author Use of Language	Mod.
8	A	11/61	7/39	2.3	Understand text	2.3 Text Sequence	Mod.
9	B	8/44	10/56	3.1	Analyze text	3.1 Analyze Literary Text	Hard
10	A	11/61	7/39	2.2	Understand text	2.2 Meaning in Informational Text	Mod.
11	D	11/61	7/39	4.2	Evaluate and extend text	4.2 Evaluate Informational Text	Easy
12	B	7/39	11/61	4.2	Evaluate and extend text	4.2 Evaluate Informational Text	Hard
13	D	10/56	8/44	2.2	Understand text	2.2 Meaning in Informational Text	Hard

Color coding indicates overall class mastery by item

Item difficulty level

Answers Report

Test P of PABC (18 students)
Teacher: 1 WIDemoGradeThree
Class: Grade 3 Reading
Grade: Grade 3
Subject: Reading/Language Arts

Subject Proficiency
Minimal (0-7 correct) [Red]
Basic (8-15 correct) [Yellow]
Proficient (16-25 correct) [Green]
Advanced (26-32 correct) [Blue]
determined by # correct

	1	2	3	4	5	6	7	8	9	10	11	12	13	14	15	16	17	18	19	20	21	22	23	24	25	26	27	28	29	30	31	32	Num correct	% correct	Growth Scale	Profic. Level
Anderson, J	C	A	C	B	D	A	C	A	B	A	D	B	D	C	B	B	A	D	D	C	A	A	B	C	C	A	D	B	B	C	D	28	88%	315	Adv	
Baker, R	D	A	B	B	C	C	A	A	D	C	C	A	B	C	A	D	B	C	C	D	D	D	C	B	D	D	D	D	D	D	B	8	25%	213	Bas	
Brown, S	C	D	C	B	B	A	C	A	B	A	D	D	D	C	B	B	A	D	D	C	A	A	B	C	C	A	D	B	B	C	D	30	94%	339	Adv	
Davis, G	C	D	B	A	D	D	C	A	D	D	C	D	D	D	D	A	B	B	D	B	A	A	C	A	A	C	D	D	B	C	C	8	25%	213	Bas	
Garcia, S	B	A	C	A	D	A	D	D	A	D	D	A	B	A	A	B	D	A	B	A	A	C	D	C	C	D	A	C	C	C	13	41%	238	Bas		
Harris, B	C	A	C	B	D	A	C	A	B	A	D	B	D	C	B	B	A	D	D	C	A	D	B	C	C	A	D	B	B	C	D	31	97%	362	Adv	
Jones, S	C	A	C	D	D	D	C	A	B	D	D	B	C	D	B	B	A	C	B	C	A	D	D	C	C	A	B	A	D	D	D	19	59%	264	Prof	
Martin, A	B	A	B	B	D	C	A	D	B	A	D	A	D	D	B	B	A	C	B	A	D	C	D	C	C	D	C	D	D	B	C	C	12	38%	233	Bas
Martinez, A	C	A	C	B	D	B	C	A	D	C	C	B	C	C	B	B	A	C	C	C	C	B	B	C	D	A	D	B	D	D	C	19	59%	264	Prof	
Miller, K	D	A	B	B	C	A	B	B	D	D	B	C	D	B	B	B	D	C	A	A	A	D	C	A	A	D	B	B	A	B	D	16	50%	261	Prof	
Moore, S	D	A	C	A	D	A	C	D	B	A	D	B	C	C	B	B	B	D	D	C	B	A	B	C	C	D	D	B	B	C	C	24	75%	288	Prof	
Nelson, J	C	A	C	B	C	A	A	A	D	B	D	B	D	B	D	C	D	C	A	B	B	C	D	B	C	D	D	C	D	D	D	19	59%	264	Prof	

Answer key

Actual student response

Growth Score indicates estimated percentage of skills mastered at grade level for each student



Discovery Education Assessment Sample Reports

Student Subskill Report

Reporting Categories	Meaning												Understand												Analyze												Evaluate												State proficiency prediction by student			
	1	16	18	19	20	21	31	32	3	5	8	10	13	15	23	29	2	4	6	7	9	14	17	30	11	12	22	24	25	26	27	28	Proficiency Number Correct (out of 32)	Proficiency Percent Correct	Total Number Correct	Growth Scale																
Question Number	1	16	18	19	20	21	31	32	3	5	8	10	13	15	23	29	2	4	6	7	9	14	17	30	11	12	22	24	25	26	27	28																				
State Code																																																				
Item Difficulty	E 1.1	M 1.1	M 1.3	H 1.3	M 1.2	H 1.3	H 1.2	M 1.1	M 2.1	E 2.1	M 2.3	M 2.2	H 2.2	M 2.2	M 2.2	H 2.3	E 3.2	M 3.2	E 3.3	M 3.3	H 3.1	E 3.2	M 3.1	H 3.1	E 4.2	H 4.2	M 4.2	M 4.2	M 4.2	E 4.2	M 4.1	H 4.3																				
Correct Answer	C	B	D	D	C	A	D	D	C	D	A	A	D	B	B	B	A	B	A	C	B	C	A	C	D	D	B	A	C	C	A	D	B																			
Anderson, J							D	C									B																28	88%	28	315																
Baker, R	D	D	C		D		B		B	C		C	B	A	D	D			C	A	D		D		C	A	D		B	D		D	8	25%	8	213																
Brown, S																	D								D								30	94%	30	339																
Davis, G				D	B	C	C	B			D		D	A	D		D	A	D		D	B	B		C	D			A		C	D	8	25%	8	213																
Garcia, S				A	B	C	C				D				A	A		A		D	D	A			D				D	C	C	D	13	41%	13	238																
Harris, B																											D						31	97%	31	382																
Jones, S			C	B								D	C		D	D		D	D		D		D				D				B	A	19	59%	19	264																
Martin, A	B		C	B	A	D	C	C	B		D				D	D			C	A		D	B		A	C			D	C	D		12	38%	12	233																
Martinez, A			C	C		C		C				C	C			D			B		D		D		C		B		D				19	59%	19	264																
Miller, K	D			C	A		B		B	C	B	D	C		D					B	D	D	B	A					A				16	50%	16	251																
Moore, S	D					B		C			D		C					A					B							D			24	75%	24	288																

WI-specific standards

Analyze

State proficiency prediction by student

Individual student performance

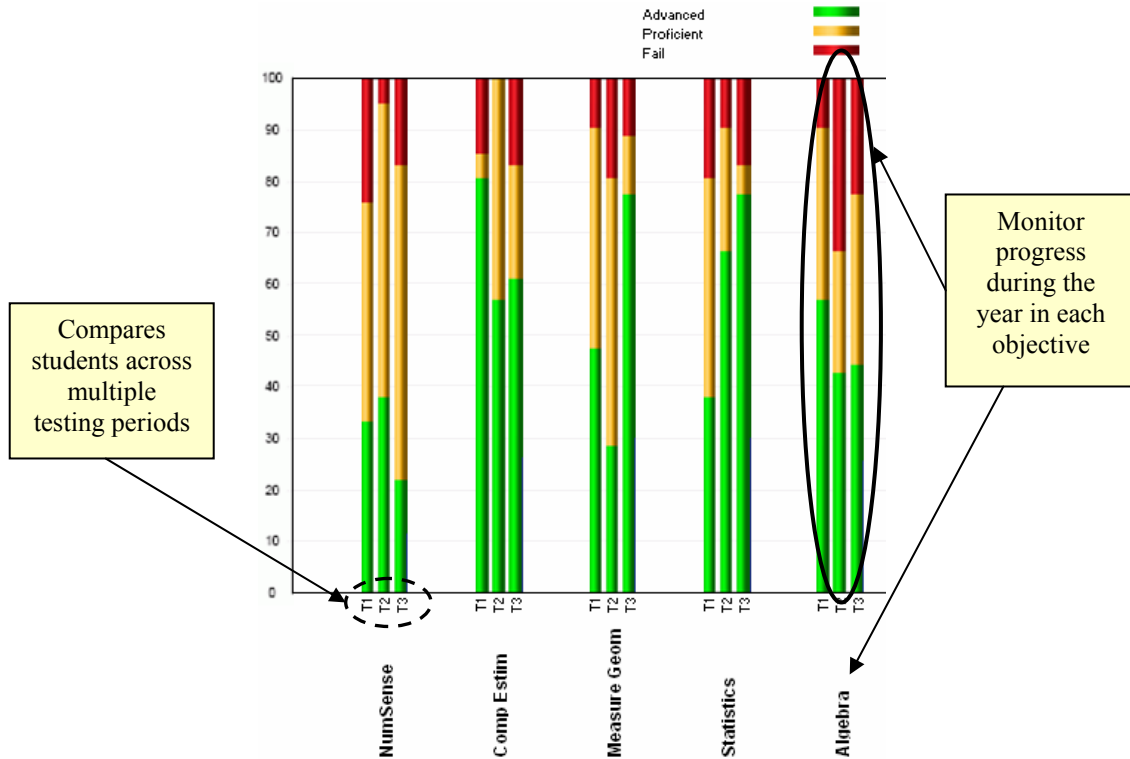
State code for each item





Discovery Education Assessment Sample Reports

Comparison Report



Individual Student Report

Student: ANDERSON, WILLIAM
Teacher: Mary Smith
Class: Grade 4 Read/Math
Grade: 4
Subject: Reading / Language Arts

Compare across multiple test periods

Great for Parent Conferences, Tutors, IEPs, and Student Files

Skills	Test			Description of Skills
	1	2	3	
NumSense	Lv 3	Lv 3	Lv 2	Using context clues, prefixes, suffixes, root words, and word relationships, the student identifies the meaning of a graphic. Simple analysis and/or direct inference may be required to comprehend the meaning of the word or phrase.
Comp Estim	Lv 3	Lv 2	Lv 3	The student identifies the following from a passage: main idea or essential message, relevant supporting details and other sequence of events.
Measure Geom	Lv 3	Lv 3	Lv 3	The student recognizes the use of comparison and contrast in a text.
Statistics	Lv 1	Lv 1	Lv 2	The student identifies meanings through the process of selecting and/or organizing information from a single text that of information. The complexity of the presentation will be appropriate to third grade. This process may involve applica
Algebra	Lv 3	Lv 3	Lv 3	The student uses the writing processes effectively to communicate.

Description of objectives

Report shows student proficiency for each assessment across all objectives

Reading/Lang Arts			
	Test 1	Test 2	Test 3
Number Correct	21	15	21
Percent Correct	84	60	84
Proficiency Score	384	460	484

Advanced Proficient Fail

Proficiency and Growth Score data



Discovery Education Assessment Sample Reports

District Reports School Comparison

District Report for Demo WI School Comparison Grade 3 Mathematics

Comparison Table: Summary of Students by Subject

	Advanced		Proficient		Basic		Minimal		Percent Prof*	Totals		
	#	%	#	%	#	%	#	%		#	%	
Test 1 Results												
All Schools	1	5.6	3	16.7	0	0.0	14	77.8	22.2	18	100	
Demo WI	1	5.6	3	16.7	0	0.0	14	77.8	22.2	18	100	
Test 2 Results												
All Schools	2	11.1	7	38.9	3	16.7	6	33.3	50.0	18	100	
Demo WI	2	11.1	7	38.9	3	16.7	6	33.3	50.0	18	100	

Comparison Table: Summary of Students by Skill

	Total Students	Tier 1 - Acceptable Perf.		Tier 2 - Supp. Instruct.		Tier 3 - Intensive Interv.		Total		
		#	%	#	%	#	%	#	%	
Test 1 Results										
Processes	All Schools	18	4	22.2	3	16.7	11	61.1	18	100
5 items	Demo WI	18	4	22.2	3	16.7	11	61.1	18	100
Number	All Schools	18	3	16.7	6	33.3	9	50.0	18	100
6 items	Demo WI	18	3	16.7	6	33.3	9	50.0	18	100
Geometry	All Schools	18	4	22.2	2	11.1	12	66.7	18	100
5 items	Demo WI	18	4	22.2	2	11.1	12	66.7	18	100
Measure	All Schools	18	5	27.8	8	44.4	5	27.8	18	100
5 items	Demo WI	18	5	27.8	8	44.4	5	27.8	18	100
Stat/Prob	All Schools	18	4	22.2	2	11.1	12	66.7	18	100
5 items	Demo WI	18	4	22.2	2	11.1	12	66.7	18	100
Algebra	All Schools	18	4	22.2	4	22.2	10	55.6	18	100

Drill Down Reports

District Report for Demo WI, WI Drilldown Report for Demo WI by Subject Grade 3 Reading/Language Arts

	% Correct	Avg. Gr. + % Correct	Avg. Growth Scale	Advanced		Proficient		Basic		Minimal		Totals	
				#	%	#	%	#	%	#	%	#	%
Test 1 Results WI Reading Grade 3 (PABC)													
Grade 3 Average	54.7	n/a	262	3	16.7	7	38.9	7	38.9	1	5.6	18	100
Grade 3 Reading	54.7	n/a	262	3	16.7	7	38.9	7	38.9	1	5.6	18	100
1 Widemogradethree													
Test 2 Results WI Reading Grade 3 (PABC)													
Grade 3 Average	61.3	n/a	277	2	11.1	7	38.9	9	50.0	0	0.0	18	100
Grade 3 Reading	61.3	n/a	277	2	11.1	7	38.9	9	50.0	0	0.0	18	100
1 Widemogradethree													

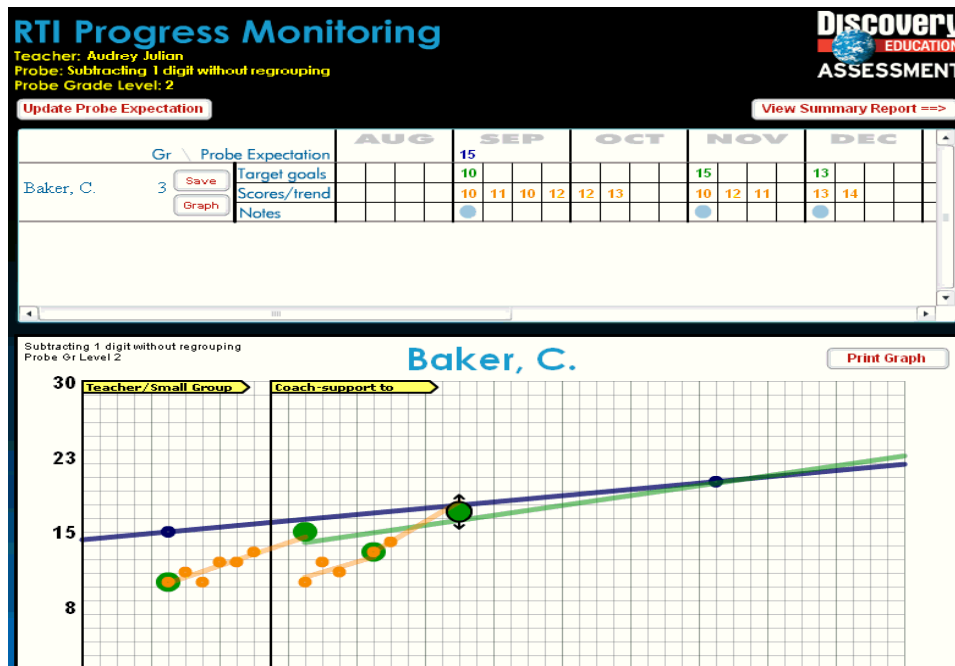


Discovery Education Assessment Sample Reports

Disaggregated Reports

	Tier 1 - Acceptable Perf.	Tier 2 - Supp. Instruct.	Tier 3 - Intensive Interv.
Grade 3 Test 1 Results			
Determine the meaning of words and phrases in context.			
Group Totals	6	6	6
Male	3	4	3
Female	3	2	3
Understand text			
Group Totals	5	8	5
Male	4	4	2
Female	1	4	3
Analyze text			
Group Totals	5	6	7
Male	4	3	3
Female	1	3	4
Evaluate and extend text			
Group Totals	5	4	9
Male	4	1	5
Female	1	3	4

Response To Intervention

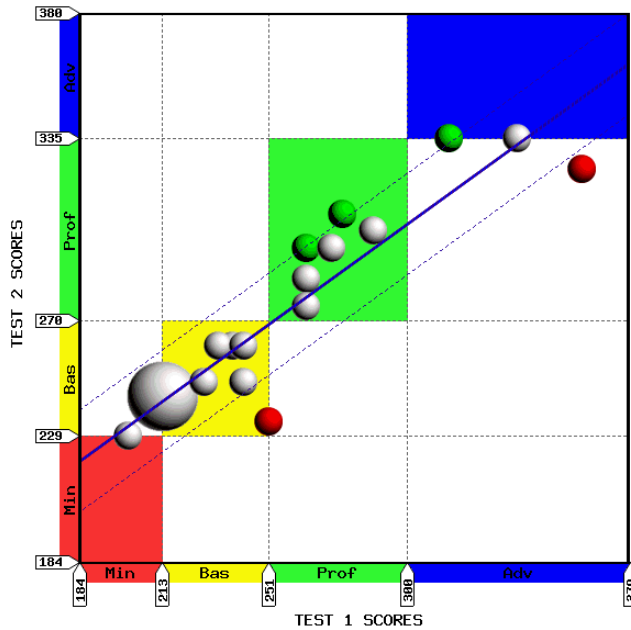




Discovery Education Assessment Sample Reports

Proficiency Level and Growth Reports

Comparison of Test 1 to Test 2



Get Excel

Below Average Students			
Name	Test 1	Test 2	Growth
Miller, Kenneth	251	234	Below Avg.
Harris, Brian	252	324	Below Avg.

Above Average Students			
Name	Test 1	Test 2	Growth
Nelson, Juanita	264	296	Above Avg.
Anderson, Jason	313	335	Above Avg.
Thompson, Larry	277	306	Above Avg.

Average Students			
Name	Test 1	Test 2	Growth
Taylor, Jennifer	242	248	Average
Williams, Kim	228	248	Average
Wilson, Sheila	201	229	Average
Martinez, Anita	264	275	Average
Robinson, Timothy	242	261	Average
Davis, George	213	243	Average
Brown, Sylvia	238	250	Average
Baker, Rhonda	213	243	Average

Average Students			
Name	Test 1	Test 2	Growth
Brown, Sylvia	238	250	Average
Baker, Rhonda	213	243	Average
Garcia, Scott	238	261	Average
Martin, Anthony	233	261	Average
Moore, Steven	268	302	Average
Jones, Sherry	264	285	Average
White, Matthew	273	286	Average

Test 1 to Test 2 Actual Change vs. Prediction

