



Discovery Education *streaming* Unparalleled Content



Access the Highest Quality Content Available

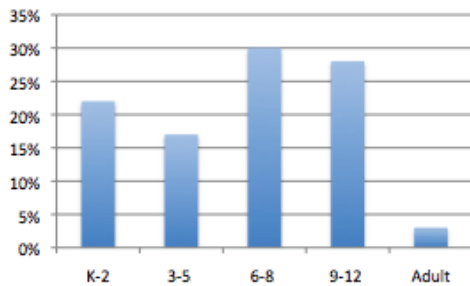
The following criteria are used to evaluate content:

- **Content Appropriateness:** All content in the Discovery Education *streaming* library is first reviewed for its appropriateness to the K-12 curriculum. Programming reflects and is connected to state, national, and international standards in core-curricular content areas and incorporates exemplary instructional methodologies and approaches.
- **Content Accuracy:** Materials are reviewed to verify accuracy of content and ensure that content is up to date.
- **Age/Grade Appropriateness:** The database is keyed to concepts and content appropriate for specific grade levels. The language of the programming is both age- and grade-level-appropriate.
- **Representation of Diverse Populations:** Programming must represent a diversity of cultures and abilities and represents both sexes fairly.
- **Production Quality:** Discovery Education includes only content with the highest overall production quality.

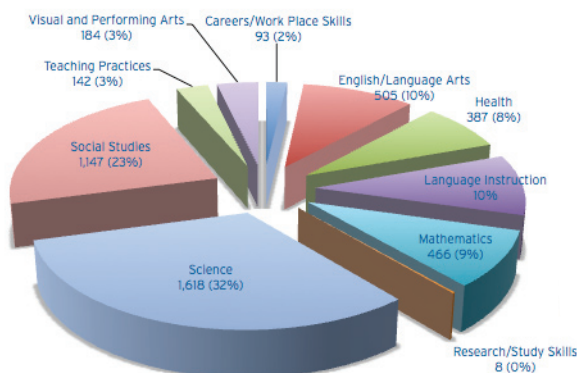


5,000 Titles
Over 50% of content has a copyright date since 2000

Grade Band of Content

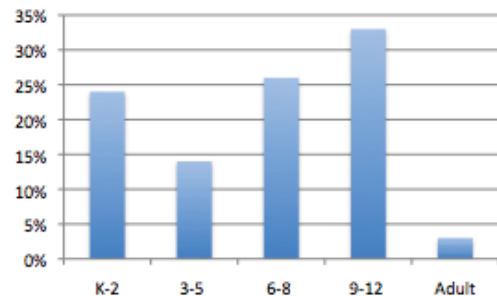


Content Subject-Area Breakdown



9,000 Titles
Over 50% of content has a copyright date since 2000

Grade Band of Content



Content Subject-Area Breakdown

