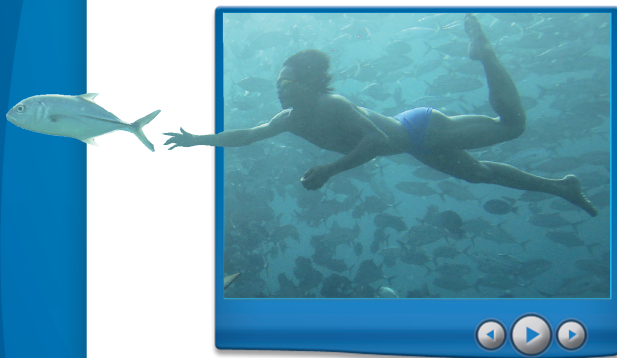


Connecting the World to the Digital Kenai Peninsula Classrooms

The Kenai Peninsula Borough School District (KPBSD) enrolls 9,170 students in K-12 and covers approximately 25,600 square miles. It is the largest employer on the Kenai peninsula and along with driving student achievement, the district is focused on increasing “student engagement by implementing quality instructional practices with embedded, 21st Century skills district wide.”

Snapshot of District



District Type	Rural
Enrollment	9,170 Students eligible to receive free/reduced-price lunches: 40% Students served by Special Education: 14%* English Learners: 2%*
Total Schools	14 Elementary Schools 4 Middle Schools 11 Secondary Schools 15 Small Schools

* Statistics are from 2007

The Challenge



.....
"The students today really respond to the graphical digital type of environment and I think that we take the best of it and Discovery Education was a great fit for us that way."

Dr. Steve Atwater

Superintendent
Kenai Peninsula Borough School District

The Kenai Peninsula Borough School District (KPBSD) is committed to 21st Century learning and they created their 2010-2011 mission statement around that focus. In addition to raising student academic achievement, the district pledged to increase engagement by embedding 21st Century skills into instructional practice. They had the mission, the technology, and needed a way to provide the content and professional development to ensure that every teacher was meeting their potential to design and deliver instruction using the best practices for digital media.

Kenai Peninsula Borough School District Implemented the Following Discovery Education Services

- » Discovery Education STREAMING Plus
- » Discovery Education SCIENCE for Elementary School
- » Discovery Education SCIENCE for Middle School
- » Discovery Education PROFESSIONAL DEVELOPMENT, including Model Lesson Demonstrations, a Day of Discovery, a Discovery Education Community Night, and the development of a Student Trainer Cadre

The Solution – Modeling Effective Use of Digital Media

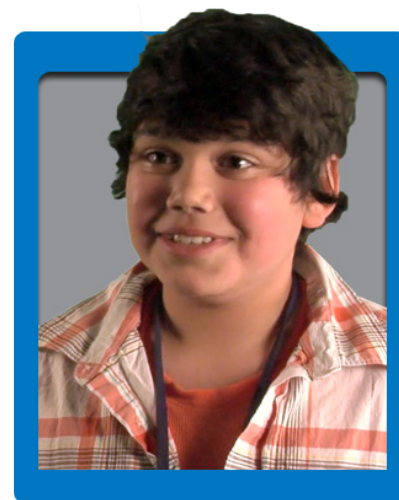
In classrooms with many modern technologies, including hand-held computers for each student, KPBSD was ready to truly integrate digital content into existing lessons. Teachers were already accessing videos through Discovery Education,

but the district saw a need to develop a better connection between content and instructional strategies. To that end, Model Lesson Demonstrations were planned to allow educators to experience the full cycle of integration, from planning through execution, including debrief and analysis. Dr. Steve Atwater, Superintendent of KPBSD noted, "One of the big attractions to Discovery Education was they were willing to devote a lot of time to Professional Development as part of the package."

A team of Discovery Education Professional Development Specialists worked across the district to deliver the scheduled model lessons. For each model lesson, the teachers, instructional coaches, and administrators were invited to participate in the planning, observation, and post-lesson meeting.

KPBSD teachers provided the curriculum map, topic, and objective information for the Discovery Education team, so that the lessons were timely and relevant to the existing class. Prior to modeling the lesson, the Discovery Education team presented their plans and intentions, so the KPBSD educators knew the rationale and cues to look for during the observation. One of the most important parts of the model lesson was the time allowed for observation: when educators could simply observe the learning and note the structures supporting it.

Following the model lesson demonstration, the team of educators took part in a debrief. According to Dave Daniel, 4th Grade Teacher, "They are excited that I am excited about learning, and they want me to get as much out of it as I can, so that I can go back and share with as many people as I can." Debrief participants were encouraged to critique the experience, ask questions, and participate in an effort to develop and share best practices.



"You don't need five textbooks. You can just log into Discovery Education, and type in a search for whatever you need, and it will pop right up with different options that you can choose from. It's great!"

Iisha
Student
Kenai Peninsula Borough School District

Involving Students as Leaders for Change

Students can be the most enthusiastic adopters of new ideas and technologies. Therefore, it seemed natural to involve the Kenai students in the Discovery Education implementation. Working with students in grades 7 – 12 at River City Academy, the Discovery Education Professional Development team created a cadre of student expert trainers.

On Community Night, a launch event designed to introduce the Kenai community to Discovery Education, these student trainers manned Discovery Education stations. Students showed their visitors how to search for videos and images, how to navigate virtual labs, and how to create digital stories. Digital media in the classroom is a powerful resource for engagement and collaboration and this foundation of enthusiastic students is an indication of success for KPBSD.

Sustaining the Change Effort



Now that the program is underway, the work of sustaining the change effort begins. The educators from KPBSD and their colleagues at Discovery Education are working closely together to ensure the most appropriate use of digital resources possible.

The Year Ahead

As the district looks to the future, Lori Manion, Professional Development Coordinator, summed up the progress to date, "It's been an excellent partnership. [Discovery Education] has been very responsive to our needs. Communication has been very solid and I feel like we are tag-teaming off one another to create what is in the best interest of our school district."